

# Investment Overview: Third Quarter 2018

Information as of September 30, 2018



## PERFORMANCE- LONG-TERM POOL

	QTR	YTD	3 YR	5 YR	10 YR
Long-Term Pool*	3.31%	4.46%	9.67%	6.83%	6.89%

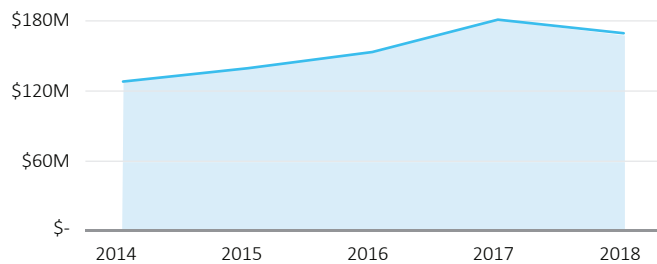
\*Net of investment fees.

## TOTAL GROWTH

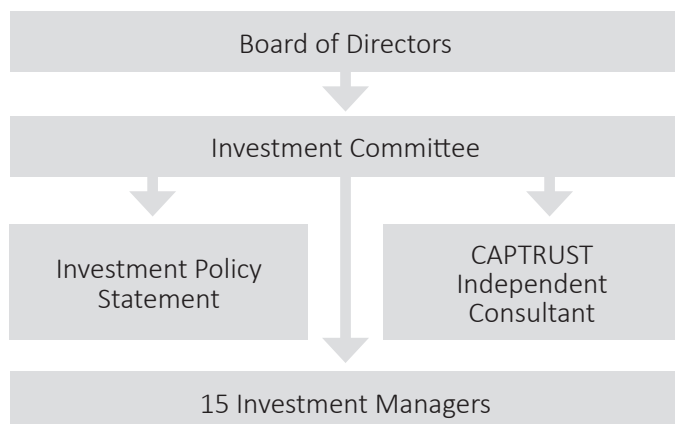
	QTR	YTD	2017	2016	2015
Beginning Value	162.6M	157.3M	137.2M	129.1M	114.5M
Net Flows*	0.1M	3.5M	0.2M	(0.9)M	16.0M
Gain/Loss	5.4M	7.3M	19.9M	9.1M	(1.4)M
Ending Value	168.1M	168.1M	157.3M	137.2M	129.1M

\*Gifts received less grants issued.

## FIVE-YEAR GROWTH



## STEWARDSHIP



## LONG-TERM POOL ALLOCATION



<b>Fixed Income</b>	<b>\$48,723,863.29</b>	<b>29%</b>
Neuberger Berman Strategic Income I	8,333,473.47	5%
SEIX Investment Advisors	40,390,389.82	24%
<b>Asset Allocation</b>	<b>\$16,563,361.39</b>	<b>10%</b>
FPA Crescent	8,445,641.60	5%
Principal Diversification Real Asset Instl	4,236,179.15	3%
Nuveen Real Asset Income A	3,881,540.64	2%
<b>U.S. Equities</b>	<b>\$73,675,487.17</b>	<b>44%</b>
Eagle Asset Mgmt Small Cap Growth	6,914,631.52	4%
Brown Advisory Growth Equity Instl	13,091,284.64	8%
Earnest Partners Small Cap Value	5,543,890.52	3%
Invesco S&P 500 Equal Weight ETF	17,353,834.31	10%
Vanguard Total Stock Market Index Adm	17,877,260.54	11%
Vanguard Equity Income Adm	12,894,585.67	8%
<b>International Equities</b>	<b>\$20,680,650.10</b>	<b>12%</b>
WCM International Equity	7,073,933.33	4%
Harding & Loevner International Equity	7,238,522.83	4%
Dodge & Cox Intl Stock	6,368,193.94	4%
<b>Strategic Opportunities</b>	<b>\$8,473,885.47</b>	<b>5%</b>
Swan Defined Risk I	8,473,885.47	5%
<b>Total Invested Pool</b>	<b>\$178,769,353</b>	<b>100%</b>
Total Long-Term Pool	\$168,117,247	94%
Cash, Conservative Pool, and Other	\$ 10,652,105	6%