

A program of the GiveWell Community Foundation

For Your Information

What is Impact Polk?

Impact Polk is the competitive grant program of the GiveWell Community Foundation.

Who can apply for Impact Polk?

All local nonprofits that have current Section 501(c)3 status as determined by the Internal Revenue Service. Local is defined as nonprofits whose mailing address have a Polk County zip code.

How does Impact Polk work?

The GiveWell Community Foundation reviews all applications to ensure that they are programs of need and meet program guidelines. Approved applications are included in the Impact Polk Publication and are distributed to all GiveWell Community Foundation fund holders and the community at large for their philanthropic consideration.

How can I fund Impact Polk?

Funding Impact Polk programs is easy! If you are a current fund holder at the GiveWell Community Foundation, simply fill out a grant request form.

If you do not have a fund with us, all you have to do is send a check to us with a letter stating the name of the program you would like to fund or donate online at www.givecCF.org. We take care of the rest, including informing the organization of your gift, following up on your grant to ensure donor intent and sending you an acknowledgment letter for tax purposes.

Can I donate anonymously?

Many contributors want to make a difference in the community but prefer to do it quietly or anonymously. All donations through the GiveWell Community Foundation are held in the strictest of confidence and donors must provide in writing if they wish to be acknowledged for their gift or permit the GiveWell Community Foundation to use their name.

What if I want more information on one of the programs listed in the Impact Polk publication?

Our professional staff is well versed on the programs listed in this publication. They are readily available to answer your questions and help you make funding decisions that make sense to you. If they don't know the answer to your question, they will seek it out and respond back with information that allows you to make an informed decision.

Why should I donate through the GiveWell Community Foundation versus going directly to a non-profit?

As a requirement, any nonprofit receiving funding from the Impact Polk grant program must provide follow-up reports to the GiveWell Community Foundation. The reports are required quarterly and upon the project's completion. The reports are shared with the donor(s) that funded the program and, in the rare event that an agency did not use gift monies as intended by a donor, the GiveWell Community Foundation has the ability to intervene until donor intent is met.

How will I know that my donation is used properly?

As stated earlier, any nonprofit receiving funding from this grants program must provide follow-up reports to the GiveWell Community Foundation. The reports are required quarterly and upon the project's completion. This information is shared with the donor(s) of the specific project.

Can I help support the GiveWell Community Foundation?

The GiveWell Community Foundation provides many opportunities to the nonprofits in our community but, just like the nonprofits we serve, we require funds to be able to provide these services. Because the GiveWell Community Foundation has a strict no fundraising policy, we rely on gifts from our fund holders and community donors to assist us in our work.

Arts & Culture

Page 1

Community Development

Page 2

Education

Page 4

Health & Human Services

Page 12

Other

Page 23

Index

Page 25

Board Members & Staff

Page 25

Arts & Culture

Bok Tower Gardens Foundation, Inc. ***The Fairchild Challenge*** **\$11,200**

"Go outside and play" is fast becoming an outmoded idea for today's young people. Yet research shows interaction with plants, gardening and the natural environment plays an important role in children's development, including building problem-solving and critical thinking skills, as well as fostering creativity. To help overcome this "nature deficit disorder," Bok Tower Gardens has partnered with Fairchild Botanic Garden to expand upon an award-winning education program, The Fairchild Challenge. Through this program, over 1,800 Polk County middle and elementary school students will participate in interdisciplinary challenges that foster critical thinking about environmental issues across the curriculum and create responses that are innovative, effective and relevant.

Explorations V Children's Museum, Inc. ***ACE - Achievers Camp at Explorations*** **\$20,000 FUNDED!**

More than 20,000 children & families engage in the Museum's walk-in educational programs annually. Storybook Camp, Adventure Camp and Financial Fitness for Families programs engage repeat families and demonstrate measurable results. This program helps underserved Storybook Camp Children enter Kindergarten ready to succeed, expands Adventure Camp's nine week program for elementary students from low income homes to include daily remediation with individual/small group tutoring, and strengthens their families through financial literacy classes. Highly qualified staff conducts the programs which include parental instruction supporting the educational process. All families participate in the Financial Fitness program to stabilize family resources.

Florida Dance Theatre ***Celebrate Dance II*** **\$9,800 FUNDED!**

Florida Dance Theatre (FDT) will host "Celebrate Dance" weekend April 25-27, 2014 in celebration of FDT's 20th anniversary. Professional dancers and instructors will come together to provide three days of master dance classes. On April 26th, FDT will also host a Gala Performance to showcase the Professional Company of FDT and feature guest artists from across the country. The program gives aspiring young dancers, ages 10 and up, the chance to participate in Master Classes with teachers from around the country and also to perform by submitting a piece of four minutes or less, that may be chosen for a free performance at Lake Mirror Promenade on April 27th at 6:00 p.m. This weekend of events will highlight Polk County as being a place to experience quality dance performances and education.

Florida Dance Theatre ***Dance Extensions V*** **\$33,615 Only \$8,615 left**

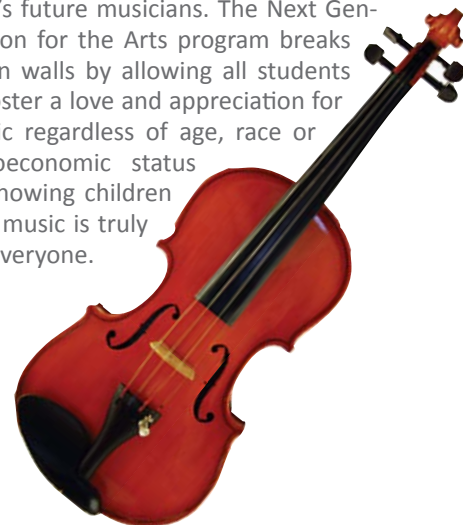
Florida Dance Theatre (FDT) offers a free program that engages children to create, think, and express themselves through dance and related arts. Three, one week summer camps for a total of 180 children ages six to 10, that qualify for the school lunch programs are held at the studios of FDT. Thirty-five students in attendance, that demonstrate exceptional enthusiasm and hard work will receive a special scholarship award to attend FDT's training academy for two classes per week and all dance wear, shoes, costumes, and an opportunity to perform in our annual Nutcracker. So many children are never given the opportunity to experience the arts. The camp allows children interested in dance and related arts, to explore their own abilities and understand the discipline, dedication, and physicality necessary in a safe and fun environment.

Imperial Symphony Orchestra ***Imperial Symphony Orchestra School Enrichment Program*** **\$10,000 FUNDED!**

The Imperial Symphony Orchestra's (ISO) School Day Enrichment Program provides 9,000 students in Polk County's 4th and 5th grade classrooms the opportunity to experience a live performance by a symphony orchestra, and the opportunity for teachers to use the weeks before and after the performance as a teaching tool on the importance of arts appreciation. For the majority of students this is their first exposure to the beauty and sounds of live symphonic music. Students arrive prepared to listen as the many different instruments weave together to produce familiar music; and once back at school discuss their interpretations of the experience. Many of our community's music teachers and musicians credit their initial exposure at a School Day Concert as to what ultimately led them to their chosen career.

Imperial Symphony Orchestra ***Next Generation for the Arts Scholarship*** **\$12,000 FUNDED!**

The Next Generation for the Arts Scholarship provides all students from Kindergarten to graduating college seniors complete and total access to all ISO performances. The ISO is forever committed to fostering the next generation of our community's musicians and believes that providing students the opportunities to experience the power and beauty of live symphonic performances will help nurture the artistic talents of Lakeland's future musicians. The Next Generation for the Arts program breaks down walls by allowing all students to foster a love and appreciation for music regardless of age, race or socioeconomic status by showing children that music is truly for everyone.



Arts & Culture



Lakeland Community Theatre *"Out of The Box" Special Needs Theatre Troupe*

~~\$9,500~~ **FUNDED!**

"Out of the Box" is Lakeland Community Theatre's "troupe with unique abilities." This troupe has grown to 30 special needs members (and counting!) ages seven to fifty. Working with the troupe are 15 teenage volunteers, four instructors, and parent volunteers. We meet weekly to work on improvisation, scene work, dance, poetry, musical theatre and more. With the help of the the GiveWell Community Foundation, last year we performed "Fabulously Funny Fairytales" in May and "Stone Soup" in late November reaching over 1200 audience members. Our goal is to continue weekly classes and perform a free show for the community every spring and fall in the years to come. This program offers a very unique population a creative outlet, an educational theatre experience, and a sense of belonging in our community at no cost to them.

Theatre Winter Haven *Making Yourself Heard* **\$12,050**

Imagine being at an important event you've long wished to see. Looks great, seems great, and ought to be great... except you can't hear it, or can't hear it well. It's not loud enough, or low enough, or there's feedback, voices cut out or...whatever. Microphones pop, speakers crackle. You might even be listening to some unwanted radio station. The sound system is older than George Burns and on daily life support. You're just not enjoying yourself. Serious renovation needed here. The system is just plain tired, 1990's technology just won't cut it. We need to update the sound system. Our audience will be pleased, our patrons delighted and our future, well, it will all just sound better.

Lakeland Choral Society, Inc. *Lee and Carol Ross Memorial Scholarship* **\$10,000**

Each year, Lakeland Choral Society gives back to the community through a series of concerts, as well as providing scholarships to local high school and college students through our scholarship program, named after two of our charter members, Lee and Carol Ross. Lakeland Choral Society has recently instituted a Lakeland area children's chorus with the help of funding received through the GiveWell Community Foundation. Subsequently, in addition to providing scholarships to high school and college students, Lakeland Choral Society is now able to provide scholarships to members of the newly formed Florida Southern Children's Chorus. With the assistance of grant funding, Lakeland Choral Society can further contribute to the musical education and participation of Lakeland and Polk area students.

Platform Art, Inc. *Platform KIDS Program 2014* ~~\$10,000~~ **FUNDED!**

Platform.5 Youth & Art showcases art created by students, grades 1-12. It develops a love and joy for creating art and gives young artists an opportunity to showcase their talents at professional venues to help grow the next generation of artists. In 2013, 24 schools and 800 students participated; and over 450 people attended the public event featuring visual, film, fashion, sound and performance arts. Outcomes: 1) students work with teachers to create art to exhibit in a public juried show format; 2) Visual/Performance art preparation meets Sunshine State Learning Standards, to build self-esteem, creative problem solving techniques, and a love of experiential learning. In 2014, a new component will allow high school students to compete to design a permanent sculpture for Veteran's Park.

Central Florida Speech & Hearing Center *Let's Loop Polk County* **\$20,000**

Let's Loop Polk County is a county-wide, grassroots initiative. The purpose of this project is to improve the hearing loss communities' quality of life by making accessible the benefits of the Assistive Listening Loop Systems. Hearing loss is the "invisible disability" and gets little, if any, attention in creating opportunities to improve communication where we work, play, congregate or worship. While installation of induction looping is the physical observation of the completed project at a facility, this also encompasses education to the members/managers of the facility, monitoring for success, leveraging the facility to exhibit looping solution to other potential entities, expand education to the community and to reach out to the targeted population.

Community Development

Community Development

Community Baptist Mission, Inc. *Continuing Feeding Program* **\$10,000**

The Lake Wales area has many social problems associated with low incomes. Hunger, crime, drug abuse and low educational levels are problems in our community. We strongly feel that if we can expand our feeding program and provide transitional housing for the homeless as well as spiritual guidance, counseling for crisis issues, anger management, life-skills training, GED services and vocational/trade training, that our clients will be able to lead better lives. Grant funds will be used to rehabilitate and equip an existing vacant building in Lake Wales that will be used to operate our feeding and transitional housing program. The facility will also be used as a center for providing counseling and training services.

Lakeland Housing Authority *YouthBuild Lakeland* **~~\$34,004~~ Only \$14,004 left**

YouthBuild Lakeland is a community development program that simultaneously addresses several key needs of low income communities: housing, education, employment, youth development, crime prevention, and the creation of a new generation of young leaders committed to community development. The purpose of the program is to unleash the positive energy of low income young adults to rebuild their communities and their lives, breaking the cycle of poverty, with a commitment to work, education, community, and family. Coupling this productive activity with job training, project-based learning, personal counseling, and participation in positive peer groups result in a transformation of the attitudes, lifestyle, and aspirations of participants. We aim to educate, inspire and assist young adults.

Mulberry Community Service Center *Financial Fitness* **~~\$11,977.50~~ FUNDED!**

Mulberry Community Service Center is applying for financial support to hire a part-time manager for its "financial fitness" program, which teaches struggling families and individuals how to better manage their money, to create financial stability.



St. Joseph's Catholic Community *Empowering Speakers of Other Languages Through English Language Skills* **\$ 10,000**

St. Joseph's Parish serves the greater Lakeland area and recognizes the diversity of population of its members. The ESL Classes at St. Joseph's is to provide a means to gain English language skills for immigrants that desire to learn the predominant language used in the United States. Speakers of other languages have the opportunity to learn and improve their English language skills to communicate more effectively with others in the community and in this United States. ESL Classes, led by a volunteer professional staff, will serve approximately 50 adult men and women over the course of the 2014 program year. The curriculum is researched-based and includes language experiences that are used on a daily basis using a diversity of learning models from role-playing to conversation clubs.

The FALLS Adventure, Inc. *Community Development focused on Service Learning & Adventure Education Research Based 21st Century* **\$7,500**

The City of Lakeland published a 2003 Westgate Neighborhood Goal, "Revitalize the Westgate Neighborhood leading to improved quality of life." The report's strategies are still viable today, though community involvement is lacking. Not lacking is the plethora of Westgate 3rd - 12th students, and the adults who love them. The FALLS will form Adventure based, Service Learning Academies for Westgate students & adults with two missions: Revitalize the Westgate Neighborhood; Promote critical 21st Century Skills necessary for life and work. Research on 21st Century Success Skills was supported by the National Academies & nine major foundations. The results were published by the National Research Council in 2012 and are part of the FALLS curriculum.

The Seed Sowers Evangelistic Association, Inc. *Impact Westgate, "A Lakeland Community"* **\$12,000**

Seed Sowers Evangelistic Association collaborates with Westgate Neighborhood Association, Heaven My Home Baptist Church, Career Tech, churches, and nonprofit agencies to increase food access in this neighborhood. Impact Westgate provides programs for Westgate citizens for advancement in food security, mental, emotional security, and employability skills. A breakfast is offered every Saturday followed by a community development meeting after which every attendee receives a bag of groceries. However, the community building is not C/O ready nor code compliant. We are requesting funding to help meet the City Code requirements or we lose the use of the building. The loss of use would severely affect the program and its participants/recipients.

Community Development

Wings of Eagles **Reach Lakeland** **\$31,700**

Reach Lakeland is a project designed to help the less fortunate communities develop in family matters and housing development. We conduct seminars that include subjects like parenting, family, and leadership. We also donate household items to homes that are in need of those items.

A Woman's Choice **Teen Impact Summer Abstinence** **Education Program** **\$5,500 FUNDED!**

Teen Impact Summer Abstinence Education Program is presented to teens, by teens that are committed to saying YES to healthy relationships and a positive future, by saying NO to pre-marital sex, drugs, tobacco, and alcohol. The volunteer teen staff shares this message about the importance of healthy lifestyles in an engaging and interactive skit presentation, while also serving as role models of this lifestyle themselves. The program will be presented to approximately 300 young teen boys and girls starting June 16th, through August 1st, 2014. Presentations will take place at local Boys and Girls Clubs, YMCA's, Lakeland PAL, Rec. Centers, adjudicated youth summer programs, and churches.

Achievement Academy **"Building Blocks for Success"** **\$50,000 FUNDED!**

The Birth to Three Program of the Achievement Academy serves young children at risk for delays or those who are diagnosed with delays or disabilities, by providing in home early intervention services. Trained Early Intervention Specialists visit the families of children in the program and provide the education and tools they need to ensure their child is reaching developmental milestones appropriate for their age. The Achievement Academy provides services to children throughout Polk County from birth through age six.

Achievement Academy **"Encouraging Bright** **Beginnings"** **\$50,000 FUNDED!**

The Achievement Academy has provided services to children with special needs throughout Polk County since 1955. Today, Achievement Academy Charter School serves children two years old through age six, and provides onsite, individualized therapy during the school day. Currently, 157 students enrolled at one of the Pre-K Charter School locations in Bartow, Lakeland and Winter Haven requires at least one, if not all three forms of therapies. Funding "Encouraging Bright Beginnings" would supplement the therapies critical to maximizing the developmental needs of students enrolled at Achievement Academy.

All Saints' Academy **STEAM Academy: Inventing for** **the Year 2020** **\$25,374**

The STEAM Academy is designed to integrate explorations in STEM subjects with creativity and design thinking. The focus is to engage students in comprehensive STEAM concepts/projects leading to innovation and entrepreneurial thinking. The purpose is to continue the efforts in our region to build STEM capacity and improve academic performance in STEM subjects. This program will have two week-long sessions, one specifically for students entering fifth through seventh grades and the second for students entering eighth through tenth grades. During the program, the students will explore project based learning concepts, working in teams to create prototypes to address a specific challenge. At the conclusion, the students will present their work to a panel of experts and their peer participants.

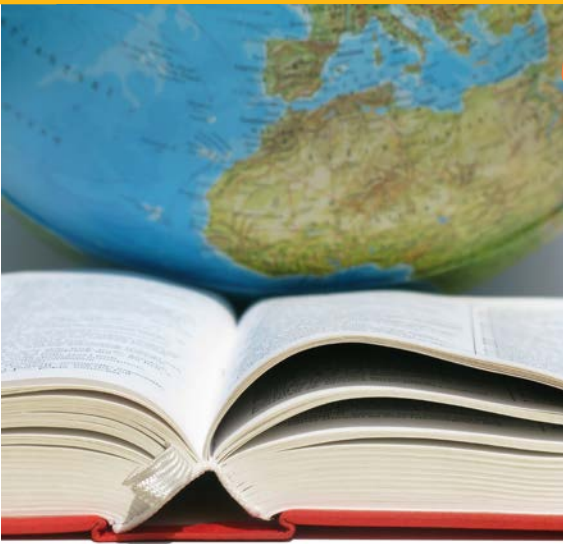
All Saints' Academy **Summer Strings Program** **\$10,600 FUNDED!**

Music is an indispensable part of life-long learning; participation in music programs prepares students to succeed. With fewer schools offering string programs, it is becoming increasingly rare for students to be exposed to the beauty of orchestral instruments and arrangements. The week long Summer Strings Program, under the direction of Tracy and Mark Thielen, will offer students an introduction to the four major string instruments: violin, viola, cello, and bass. During the course of the week, students will learn basics and have the opportunity to play each of the instruments. In addition, they will hear guest musicians from around the area and see an electric quartet perform. The goal of the program is to introduce and inspire a love of music and string instruments to students.



Education

Education



American Red Cross

Pillow Case Project

\$6,176 Only \$1,676 left

In the aftermath of Hurricane Katrina, the Southeast Louisiana Chapter of the American Red Cross began the Pillow Case Project to educate youth about emergency preparedness through a fun, artistic activity: decorating pillowcases. The program has now spread nationwide and targets students third through fifth grades. The Red Cross has partnered with Disney to expand the program. We are requesting funding to provide Disney's Pillow Case Project training to 1,000 students affiliated with the Boys' and Girls' Club and other like agencies in Polk County.

Camp Fire USA Sunshine Council

Volunteer Youth Corps "Thrive" for Success

\$36,024 Only \$24,024 left

Camp Fire will infuse its current Volunteer Youth Corps (VYC) program with the Step-It-Up-2-Thrive methodology developed by the Thrive Foundation for Youth (Menlo Park, CA). This will allow us to guide middle and high school students in Polk County to build skills needed to "thrive" now and in the future. The current 85 teens plus an additional 40 teens, 45% from financially at-risk families, will gain insight into their community and provide more than 3,500 hours of sweat equity, helping 50 non-profits and other organizations throughout the year. Through time spent with trained adult staff and volunteers on projects, teens will find their individual "sparks," challenge their personal mindsets, and cultivate goal setting and critical thinking skills.

Early Learning Coalition of Polk County

Early Learning, Future Success **\$10,000**

We at the Coalition support research showing that attending high quality, early education programs drastically increases a child's cognitive and social development. QRIS is a voluntary program that recognizes state and national accreditation associations that endorse quality early childhood education. Our Quality Rating Improvement System (QRIS) establishes guidelines and provides ongoing support for centers that are committed to providing quality early education and care preparing children to start school ready to learn. In Polk County, QRIS is funded in part by United Way and focuses on children ages three through five, but we want to expand this focus to include children ages zero through three. Our goal is for all children to have the best foundation in their educational journey.

Family Fundamentals/UWCF

Bridge the Gap to School Readiness-My Own Library

\$6,940 FUNDED!

Bridge the Gap to School Readiness is a five day a week program specifically designed to teach and model outcome based activities that prepare children to enter school ready to succeed. In a quality, developmentally appropriate environment, children and their parents experience a literacy rich environment in the classroom itself and within the "play" experiences provided. This program models and promotes positive caregiver interaction. The parents learn how to be the best first teacher they can be. The "My Own Library" provides the children with age-appropriate books to take home as their own. They are building a library while their parents now have access to quality resources to continue the learning/teaching process.

Family Literacy Academy at Lake Wales

Empowering Parents and Their Preschoolers

\$23,248 FUNDED!

The Academy, "Where Families Build Their Future Through Education", exists to promote and improve adult and childhood education and parenting skills to enable families to achieve their academic potential, realize their economic goals, enhance and improve the family unit, and foster greater community involvement. The FLALW engages the community in support of its efforts to tackle the impediments to literacy that frustrate our families' futures. Through adult, childhood and parenting education our families can each break the cycle of poverty and illiteracy restricting individual and family growth. Our parents become better first teachers of their children. Our adults can achieve their academic goals, setting an example for their children. Our families become better citizens.

Florence Villa Community Development Corporation

FVCDC Youth Leadership Development Program

\$25,000 Only \$10,000 left

The FVCDC Youth Leadership Development Program offers an after-school and summer development program for youth between the ages of 13-17. The program is designed to enhance the life skills, knowledge, and attitudes necessary for participants to become successful in all aspects of their daily lives and future endeavors. Program components include: Conflict Resolution, Cultural Awareness, Civic Consciousness, Effective Communication, Etiquette, Financial Literacy, Health and Hygiene, Pregnancy Prevention, and Workforce Readiness Skills Development.

Education

Florida Southern College **Circle B Bar Reserve Collaborative** **Research Project** **\$50,000**

Florida Southern College (FSC) proposes a project to determine the economic value of the Circle B Bar Reserve from a natural resources perspective. It will include FSC science faculty and students, Lakeland High School (LHS) science teachers and students enrolled in an AP environmental science course and individuals from the Polk County Parks & Natural Resources Division. The research will begin summer 2014 as FSC students install, test, calibrate and analyze water quality instrumentation data to determine the economic impact of water filtration at CBBR. During fall and spring semesters, FSC and LHS students will continue to monitor and assess water quality. They will be guided by faculty and the environmental lands stewardship coordinator for the Polk County Parks & Natural Resources Division.

Florida West Coast Public **Broadcasting Inc. (WEDU)** **WEDU PBS Educational Resources** **Workshop Series** **\$5,500 FUNDED!**

WEDU is seeking funds to provide free workshops on PBS educational resources to educators and families in Polk County. Workshops will be offered through local organizations and schools serving area children and families, particularly in at-risk areas. Families will learn about free Ready To Learn trans-media resources, available from a home computer or library, created to enhance school readiness and classroom skills. Educators will be instructed in the use of Florida PBS LearningMedia, an innovative, free service for teachers featuring 35,000+ digital learning objects - lessons, videos and interactives, aligned to National and Common Core State Standards, to support teaching PreK-13+ and derived from programs like NOVA and Super WHY and content from NPR and the Library of Congress.

Geneva Classical Academy, **Inc.** **Technology for Teachers** **\$12,360 FUNDED!**

This project would acquire 20 laptop computers, one for each of our classrooms to make our excellent teaching even more dynamic and current, more interactive for classroom discussions, and more professional for teacher and student presentations.

Girl Scouts of West Central Florida **Get REAL! Mentoring Program** **\$30,675**

Girl Scouts of West Central Florida (GSW-CF) is requesting funds for our Get REAL! program for 150 middle school girls. Girls can face many challenges and barriers to academic success. Get REAL! was designed to combat negative influences, provide positive role models and give girls a safe place to share experiences with other girls. Our curriculum aligns with Sunshine State educational standards. Girls will learn about advocacy and gain skills like networking, planning and learning to speak up about issues that impact themselves and others. Enhancement field trips will take girls to Tallahassee to meet state representatives and participate in a mock debate. They will take a college campus tour to inspire them to not only succeed in middle and high school, but to seek a higher education.

Gulf Ridge Council, BSA **Low Income Scouting** **Transportation** **~~\$35,000~~ Only \$10,000 left**

This project gives scouting the means to provide transportation, by means of a 15 passenger van, to and from scout camp and other scouting events on a regular basis to many of the 628 low income scouts we serve in Polk County. Scouting has a much greater impact on a young person when they have the opportunity to put into practice at scout camp the new skills and knowledge that they are learning in their weekly meetings. Currently many of these scouts can only attend the weekly meetings held in their local community center or school. To keep these youth excited, challenged, active and advancing in the Scouting program it is vital that we provide transportation and staff support to these young people so that scouting can continue to have a positive impact on these young people.

Harrison Center for the Arts **Parents Association, Inc.** **Harrison Summer Acceleration** **Academy** **\$25,000**

The Harrison Summer Acceleration Academy is an educational program designed to provide rigorous academic instruction during a time when students typically are not in school. Students can take honors-level classes that meet graduation requirements, which in turn will allow them access to more rigorous courses during the traditional academic year. The program is staffed by certified Florida teachers and promotes a compressed curriculum that stresses creativity and rigor while adhering to state standards. Students involved in the summer academy "accelerate" their curricular progression leaving more room in the traditional school schedule for them to pursue additional arts courses and/or Advanced Placement classes at the secondary level.



Education

HELP of Fort Meade

Let's Get Ready

\$12,519 FUNDED!

This project will give more of our children entering kindergarten the opportunity to attend "Camp READY" by offering bus transportation. For the past three years UWCF has funded "Camp READY" and the Learning Resource Center has conducted the summer camp here in Fort Meade. This is a collaborative effort to improve kindergarten readiness in Ft. Meade. Last year, only 24% of our children demonstrated kindergarten readiness. Camp Ready provides four weeks of interactive learning (reading readiness, cooking, movement, and crafts). On average, the Camp READY! model yields language development gains equivalent to six months. Sadly, only about 18% of our children are actually able to complete this summer camp. We suspect the main reason is a lack of transportation in this community.

Jaylens Challenge Foundation, Inc.

**NO BULLIES IN SCHOOL ~
BULLYING NO WAY!**

~~\$50,000~~ Only \$25,000 left

Jaylens Challenge is dedicated to promoting awareness and prevention of bullying through education and community service. One in four students are still bullied in the United States today. Our partnership with Polk County Sheriff's Dept., Lakeland Police Dept., and the Polk County School Board has proven to change these statistics for Polk County students. Our outreach teaches mental & physical restraint and the importance of banishing bullying. Our Anti-Bully Awareness presentations include Training and Curriculum for all students and faculty on how to prevent and control bullying. Our goal is to reach the emotional victims and bullies in our schools. This grant will educate and impact 8,000 students while better developing our non-profit as a resource for students, teachers, and families.

Junior Achievement of Tampa Bay

Finance Park Virtual in Polk County

\$10,000

JA of Polk County will deliver JA Finance Park Virtual to 400 Polk area high school students. Finance Park Virtual addresses the critical need to improve financial literacy and work force readiness among young people by utilizing the latest technology to immerse students in a virtual community where they take on adult roles as workers, business persons, and consumers. Using computer simulations, they explore the world of work and personal finance. Students take on fictional identities that expose them to real life situations and decisions. In four on-line sessions led by JA trained volunteers, each student is assigned a job, age marital status, income and educational background. They then must successfully develop and manage a budget, maintain a household and pursue a career.

Junior League of Greater Lakeland

Reading is Fundamental (RIF)

~~\$10,000~~ FUNDED!

Two-thirds of America's children living in poverty have no books at home. The most successful way to improve the reading achievement of low-income children is to increase their access to print. (Newman, Sanford, ET all. "Americans Child Care Crisis: A Crime Prevention Tragedy"; Fight Crime; Invest in Kids, 2000.) Reading is Fundamental (RIF) ensures that all children have access to books, particularly those children most at risk for educational failure. RIF volunteers distribute books, stage reading motivation activities, and promote the importance of literacy at targeted schools in Polk County. The Junior League of Greater Lakeland maintains this 39-year-old program as the oldest and longest running RIF program in the State of Florida.

Junior League of Greater Lakeland

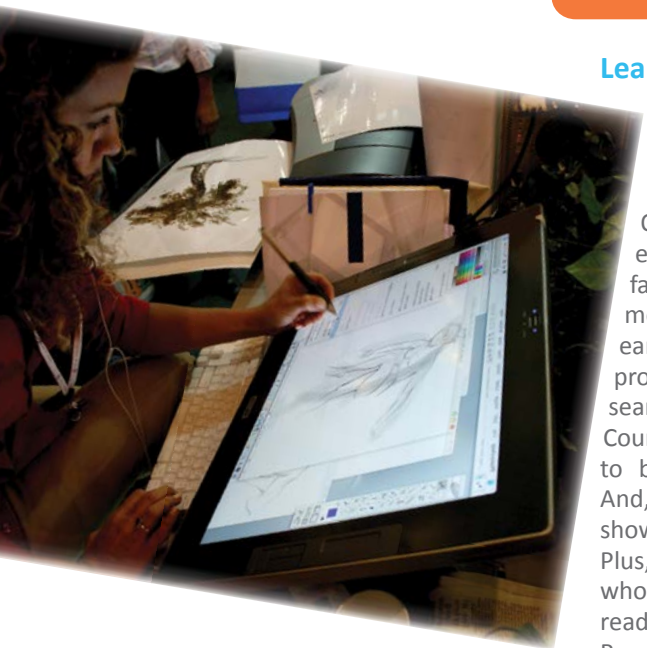
Ready to Read (RTR)

\$10,000

Ready to Read is a comprehensive program serving students at Title I schools in the poverty pockets of Lakeland. Historically, this program serves one school for two years, providing biannual family reading workshops, classroom teacher support, and overall school support. Each year, books and programs are chosen to help students make learning gains inside and outside of the classroom. Families who attend the workshops participate in hands-on activities to better engage their children in reading. The League partners with organizations, like the Learning Resource Center, to provide relevant and exciting activities. The program has recently expanded to include the Association of Junior Leagues International's initiative, Kids in the Kitchen, which places an emphasis on healthy eating habits.



Education



Learning Resource Center of Polk County, Inc. *Barton Reading Program* **\$12,750**

Our children can be successful readers! Ninety-five percent of reading failure is preventable through implementation of appropriate diagnosis, early intervention, and prescriptive programs, according to leading research. Over, one third of entering Polk County kindergartners were not ready to be successful (UWCF 2012-2013). And, 40 percent of 3rd graders do not show proficiency in reading (FDOE). Plus, 75 percent of 3rd grade students who are poor readers will remain poor readers in high school. The Learning Resource Center proposes to bring Barton Reading System's researched-based strategies to students (K-12) identified with learning disabilities, such as dyslexia and auditory processing, as well as students struggling with other language/reading issues.

Magnolia Montessori Academy *Magnolia Montessori STEAM Discovery Lab* **\$10,000 FUNDED!**

Magnolia Montessori Academy is a public charter school that follows an authentic Montessori program to provide individualized education specifically tailored to the learning style of each student. Each child has their own lesson plan and is challenged at their individual level for each subject. This is across the board for all children not just those that are gifted or have special needs. Creating an environment where each student can thrive requires supplemental and enrichment materials above and beyond those used in a traditional classroom. MMA is seeking funds to create a hands-on STEAM discovery lab that students can use to explore math, science, and art concepts in depth at their own pace as well as additional Montessori materials to enhance each classroom.

Lakeland PAL *PAL Youth Leadership Summer Program* **\$33,960 FUNDED!**

The 2014 PAL YLSP will offer three distinct components; teen pregnancy prevention, workforce readiness training and interviewing skills. Daily instruction will include classroom sessions with staff facilitators, as well as guest speakers utilizing inter-active learning scenarios, role playing, personal testimonies and field trips to local agencies that specialize in family planning, teen/crisis pregnancy and other support. Workforce skills will be taught in similar environments, with field trips to local and out-of-state businesses and accredited colleges/universities where youth will experience actual work and secondary education environments firsthand and have opportunities to question administrators, managers, human resource specialists, employees and students.

Learning Resource Center of Polk County, Inc. *Camp READY! 2014* **\$32,595.10 FUNDED!**

Learning Resource Center's Camp READY! is successfully improving kindergarten readiness in Polk County where nearly one third of kindergartners do not have the language skills required for school success. With a proven positive track record, Camp READY! provides four weeks of interactive learning, (reading readiness, cooking, movement, and crafts). On average, the Camp READY! model yields language development gains equivalent to six months. About Camp READY! one parent said, "Amazing program! I am recommending it to every parent I know. The kids loved coming to camp every day. We are very impressed with the way you taught a great deal of skills and information in a very fun way." LRC respectfully requests the GiveWell Community Foundation's help to bring Camp READY! to 100 Kindergartners in 2014.

Neighborhood Ministries, FUMC Lakeland *Neighborhood Ministries* **\$5,000 FUNDED!**

Our ministry is a free program that operates to service the children and youth of our community by providing a faith based, safe place for them to come after school where they can get a healthy snack, homework help, counseling from a LMHC if needed, specialized skills training for future educational or employment opportunities, and spiritual enrichment. In addition, it also serves the greater good by preventing juvenile crime and teen pregnancy by providing supervision during the critical hours after school and during the summer months. Our target group is children and youth from Kindergarten through 12th grade. We currently have 144 enrolled in our after school program (K-12) and 91 enrolled in the full-time summer program (K-5), five days a week.

Education

Our Children's Academy *Building a System To Enhance and Promote Community Inclusion for Students with Behavior Disabilities*

\$11,593.84 FUNDED!

Using an established school-wide behavior platform, exceptional education students will be taught replacement skills in an intense implementation model to provide appropriate, alternative activities. The struggle for individuals with disabilities to assimilate into their community is often a direct result of a deficit in social skills. In order to be proactive and encourage our students to become members of their communities, we will teach social and interpersonal skills that focus on empowering them to independently interact with other individuals outside their immediate environment. By enhancing these skills and generalizing them to extensive social networks, our goals is to provide our students with a repertoire of skills that allow them to have the highest quality of life possible.

Our Children's Rehab Center *Building Community Awareness in Children with Complex Communication Needs*

\$9,990.60 FUNDED!

Building Community Awareness in Children with Complex Communication Needs will help both parents and the community to better serve students who use PECS, (Picture Exchange Communication System). This state of the art program allows students with complex communication needs the opportunity to be heard and understood. Our goal is to show the community the importance of communication, how it impacts students and how the students are able to communicate effectively with others through the use of PECS. Ultimately, Our Children's Rehab Center hopes to build partnerships through a community outreach program that will allow students to cultivate rigorous and relevant experiences, while also learning appropriate social skills and, most importantly, helping our students to feel like they belong.

Pace Center for Girls Inc. *Step up the PACE in Math* **\$34,504.49 FUNDED!**

Nearly half of PACE Polk's students are behind in math; for 35% of them, math is their least favorite subject. In collaboration with Learning Resource Center and Polk Museum of Art, PACE Polk has designed an innovative approach to teaching foundational math skills to these struggling students. This project will spark students' interest in math and awaken the brain through innovative enrichment activities. The key to awakening a new affinity for mathematics in students is to impart that math is not as much about calculations and memorization as it is predicated upon understanding, appreciating and taking ownership over a process, creating symmetry and producing coherence out of chaos. The visual arts, poetry and dance can help to achieve this goal of mastering math fundamentals.



Parker Street Ministries *Building Bridges, Closing Gaps* **\$50,000 FUNDED!**

The Building Bridges, Closing Gaps project supports an academic enrichment program for at-risk children. The program is more than homework help. Staff actively partner with parents, teachers, and volunteers to ensure adequate progress is made. Children engage in individualized educational exercises that reinforce skills learned in school. All this happens in a structured, safe environment through an after school program and a summer camp. The program has a capacity to serve 100 children in grades kindergarten through eight. A separate high school component serves 20 youth. Parker Street Ministries has a six year proven track record of academic improvement and grade level promotion for 98% of children continuously enrolled in its academic enrichment program.

Polk County Board of County Commissioners *Dream Builders* **\$1,400**

Martin Luther King, Jr. had a dream for a better world through this grant and is important because it will not only increase the children's emergent literacy skills and access to books in the home, it will teach children the importance of "DREAMS". During the week of the MLK holiday, the RSVP volunteers' partner with AmeriCorps volunteers to go out to Title I kindergarten classes around Polk County armed with Martin Luther King Jr. Day books, a hands-on activity and snacks. The RSVP & AmeriCorps volunteers tag team while one reads the book to the students the other helps the students with the hands on activity of drawing their dreams. The volunteers will hand out snacks and a copy of the book to each student.

Education

Polk County Schools, Florida First Start, Wilfred Smith Resource Center *First Start Fitness* ~~\$8,000~~ **FUNDED!**

First Start Fitness is a three part program established to promote physical fitness and a healthy lifestyle for children and their parents. Healthy, fit parents are able to experience floor time activities with their children, thus promoting much needed bonding and social-emotional development. Parents and children will be introduced to activities that promote successful parent-child interactions. Items used during these activities will be available in the lending library for families use at home. Parents will attend aerobic, walking, and nutrition classes to improve their fitness and their family's lifestyle. Families will participate in developing and growing a container garden consisting of fruits, vegetables, and spices. All who participate will share in the harvest.

Polk Education Foundation *Teacher to Teacher Connection* *Grants* **\$10,000**

There are not enough hours in the day for teachers to think of new teaching ideas, so the Teacher to Teacher Connection (TTC) acts as a resource of ideas that have been proven successful. The TTC seeks out innovative programs, rewards the educators that developed them, and helps share their programs with other educators. "Developers" receive a stipend and money for classroom supplies. Teachers who want to replicate a Developer's program apply for a supply grant to do so through our Adapter Grants. They have access to the supply list and lesson plans, already prepared by the Developer, who can act as a mentor if needed during the implementation process. Students are the ultimate benefactors of this program when their teachers get new ideas and supplies to enhance student learning!

READ Lakeland, Inc. *Raising the Bar: Enrichment* *Topics for Adult Learners.* ~~\$8,850~~ **Only \$2,850 left**

Read Lakeland is an adult literacy-tutoring program serving the west area of Polk County. Our mission is to improve the quality of life in our community through the teaching of basic literacy skills to adult learners and promoting adult and family literacy. Raising the Bar enrichment program will augment the literacy skills of adult learners through personal growth in basic life skills. Enrichment topics cover personal finances, job search skills and maintaining a healthy lifestyle. The program will take participants to an enhanced level of learning on how to cope with the many aspects of life that are seldom manageable due to a lack of knowledge. The courses are offered to READ Lakeland participants and to the public. READ Lakeland will serve approximately 80 adults.

READ Polk, Inc. *READ Polk Tutor Training* ~~\$1,165~~ **FUNDED!**

READ Polk is committed to addressing the adult illiteracy problem in Polk County. READ Polk exists to provide community awareness of adult illiteracy and to support area literacy councils by providing trained tutors, financial support and resources to help them meet the needs of adult learners. READ Polk is seeking funds to offset the cost of providing four free "new" tutor training sessions with a goal of 60 new tutors and one to two Continuing Education trainings for our current volunteer tutors. A literate lifestyle eliminates economic, social and physical barriers that prevent families participating fully in today's culture. This financial assistance will help us in building better lives of the members of our lowest income neighborhoods across Polk County.



Santa Fe Catholic High School *Classroom Technology* *Enhancements* **\$4,500**

Understanding and accepting that technology has become increasingly important in 21st Century learning, we at Santa Fe Catholic High School, are fully committed to continue classroom technology enhancements. This technology allows for an adaptive, project based learning environment that helps prepare students for the real world in which they will soon find themselves. State-of-the-art interactive devices and audio systems are but a few of the enhancements we would like in each of our classrooms. When discussing technology in the classroom, a recent issue of "The Economist" magazine quotes Bill Gates, "This is a special time in education." It is vital that students are given the opportunities that will enable them to compete with the best and brightest in their chosen fields.

Santa Fe Catholic High School *Santa Fe Catholic Serves Special* *Students* **\$5,500**

Following our vision to prepare all students for college and the ever-changing, complex world that lies ahead, Santa Fe Catholic High School now has a skills program that embraces the students with learning challenges. We recognize that education today is very different than it has been historically. Learning disabilities and children with special needs have been increasing at an astounding rate. We are fully committed to educating all of God's children, not just the academically gifted. To this end we offer our Skills Program to those in our community. This program is successful due to our specially trained faculty and academic resources geared to those students with Autism spectrum disorders and other special needs.

Education

South McKeel Academy, Inc.

Bring the World Into the Classroom: Using Interactive Videoconferencing to Gain 21st Century Skills

~~\$6,016~~ Only \$1,016 left

Interactive videoconferencing (IVC) in the classroom is now a reality. The possibilities in education are endless with these powerful communication and learning tools. Students are now able to interact and collaborate in real time with experts, authors, and peers in classrooms around the world. IVC provides highly engaging, active learning environments that get students excited and hold their attention while helping them develop effective communication and collaboration skills necessary for a successful future in our global economy and workforce. This project will foster these essential 21st century skills in our students at all grade levels, while cultivating global awareness and citizenship.

St. Joseph's Academy

1:1 Technology Program **\$10,323**

The teachers at St. Joseph's Academy strive to teach each child at his or her level. Having hand-held devices for the students or e-learning, not only ensures that our students are learning 21st Century skills—collaboration, communication, creativity and critical thinking, but allows teachers to easily match learning styles, pace of learning, and student interests for more individualized productive and engaging learning. The teachers will be able to load curriculum units on the student's tablet in advance or send out an instant update, which will accommodate students working at many different paces and levels. Teachers will be able to get data, monitor functions, send apps or block apps, and see the work the student is doing on their tablet for immediate feedback and facilitation.

Success By 6

Imagination Library **\$9,000 Only \$6,000 left**

The Imagination Library helps parents read with their children. Children will have books of their very own! Each month a carefully selected age-appropriate book is mailed in the child's name directly to their home. They look forward to a new and exciting reading adventure from the Imagination Library each month until they turn five years old, as long as they remain a resident of the project area. The Imagination Library is a free gift to our at-risk children. All we ask is that parent read to their children. Precious memories are created while imaginations soar.

Sun N Fun Fly In Inc.

A Brighter Future through Aerospace Education **\$20,000**

SUN 'n FUN Fly-In, Inc., in cooperation with the Central Florida Aerospace Academy and the Aerospace Center for Excellence, is in the process of enhancing our Florida Air Museum exhibits. Our goal is to add and transform current exhibits into a more hands-on and interactive learning experience for our visitors while maintaining the rich history of aviation. These exhibits will promote education in the core areas of Science, Technology, Engineering and Math using aviation as the catalyst.

Sunrise Community of Polk County

Sunrise Community Adult Day Training Individualized Supports Program **\$25,000**

Sunrise Community Adult Day Training Individualized Supports Program will provide adults with developmental disabilities that reside in Polk County, the opportunity to attend a life skills program dedicated to serving people with developmental disabilities (i.e. autism, cerebral palsy, Down syndrome, and intellectual delay). As a result of severe state funding cuts to the Medicaid Waiver program, many of the individuals we serve are facing a decrease or even elimination of services such as Adult Day Training. Adult Day Training provides training in vital skill sets required for success in everyday life such as math, literacy, and work skills that assist in the transformation and the personal development of the persons we serve.

Theatre Winter Haven

Battling the Bullies **\$21,365**

"What if the kid you bullied at school turned out, after he grew up, to be the only surgeon that could save your life"? This is what one student wrote after an unhappy experience. The need to stop the bullies is urgent. The need to appeal to the ages where this begins is immediate. The need to prevent the violence and hurt is now. Studies show that between 15-25% of students are bullied frequently. Let us provide an opportunity to fight the increasing bullying problem among our young people by presenting and performing a published BULLY PLAY in elementary schools in Polk County. The production will be directed and cast with professional personnel and will tour in the Fall of 2014.



Education

YMCA of West Central Florida Kindergarten Learn to Swim Program

~~\$20,000~~ **FUNDED!**

Children in Florida should know how to swim, but unfortunately, drowning is still a leading cause of accidental death of children under age seven. Also, children who are victims of near drowning are often left with a debilitating condition. The YMCA Kindergarten Learn to Swim Program is a two week interactive water safety and education program. In partnership with Polk County Schools, the children prepare in their classroom for their week of swimming instruction by learning about water safety, adult supervision, and identifying danger areas. The following week, children are transported to one of our aquatic facilities for a full week of lessons by certified instructors. Our goal is to teach 1,600 kindergartners at 16 elementary schools, reaching a new population of children every year.

Alliance for Independence AFI's Making A House A Home - Aging in Place at Carleton House Group Home

~~\$13,985~~ **FUNDED!**

The Carleton Group Home has been in operation since 1995. There are 7 residents living in the home ranging in age from 35 to 66. In addition, there is a 24 hour staff which provides care, guidance, transportation and supervision. The Home is a stable living environment where clients can continue to practice using the life skills learned at AFI. Traditionally, as clients become frail or elderly, they are transitioned out of group homes, often to institutions that are ill equipped to handle the needs of the developmentally disabled. It is our goal to develop an aging in place model which would enable our clients to live amongst their friends & family as long as possible. We are requesting funds for staff training, & to retrofit a bathroom for greater handicapped accessibility.

Alzheimer's Association - Florida Gulf Coast Chapter Caregiver Connection

~~\$16,500~~

The Caregiver Connection is a coordinated array of services designed to address the unique support needs of people living with Alzheimer's disease and their caregivers. Caring for someone with Alzheimer's disease is one of the largest commitments a person can make, but it is not something that most people prepare themselves for. Alzheimer's disease can span up to 20 years and is emotionally, physically and financially challenging to caregivers. The Caregiver Connection will provide caregivers with support that will reduce their stress, reduce the adverse physical and mental health impacts associated with care giving, reduce caregiver isolation, enhance skills to provide more effective care and enable them to become more self-sufficient and in control of their care giving responsibilities.

Alliance for Independence More CHOICES

~~\$50,000~~ **Only \$25,000 left**

In 2013 AFI implemented CHOICES, - Community, Health, Opportunity, Independence, Collaboration, Education, & Success. CHOICES is a unique approach to educating individuals with developmental disabilities. By separating programs into individual classes and having skills trainers specialize in specific program areas, CHOICES provides a very content rich experience. CHOICES programs include: Culinary, Horticulture, Clerical, Art Studio, Healthy Behaviors & Life Skills, ELearning, Skills Training, Independent Living/Residential Life and Vocational Skills & Employment. While clients benefit from the broad array of programs, we know we are just beginning to scratch the surface of each of the CHOICES program areas. AFI seeks funds to create new and enhance current CHOICES program areas.

Anchor House Ministries "Making Men from Broken Boys"

~~\$20,000~~

Anchor House collaborates with Heartland for Children, Polk Works, Polk County Schools, mental health counselors, life skills coordinators, the Learning Resource Center, Peace River Center, Tri-County, and volunteers from local religious, civic and service organizations in an effort to prepare young men that have been displaced by tragedy toward independence or reconciliation. We use role models, tutors and a supportive nurturing structure built on the principal of Trauma Informed Care to promote healing and change. Making Men from Broken Boys describes both the situation from which these boys come and our goal in preparing them with intensive life coach training to take responsibility for management of their household and job skill preparation so they are prepared for independence.



Health & Human Services

Health & Human Services

Be The Match

Bone Marrow Drives

~~\$15,000~~ **FUNDED!**

We work with patients that have cancer and other blood disorders that need a Marrow transplant to save their life. The NMDP began connecting patients with unrelated donors in 1987 with a registry of just 10,000 marrow volunteers. Now, Be The Match Registry has grown to over 10.5 million potential donors and over 250,000 cord blood units. It is accredited by the World Marrow Donor Association as the largest and most racially and ethnically diverse registry in the world. Cooperative registries worldwide allow us to act as a single point of access to over 18 million donors and over 400,000 cord blood units. It cost about \$100 for each donor to be tested and added to the registry. 100% of the money granted from the Community Foundation will stay in Lakeland to add donors to the registry.

Big Brothers Big Sisters of Tampa Bay

Technology Upgrade

~~\$8,150~~

We perform mandatory criminal records background checks on all volunteer mentor applicants, typically through the Florida Department of Juvenile Justice, using fingerprints. We use a paper & ink system for fingerprints in our Polk Office, which has a high error rate resulting in delays. It also takes weeks for our agency to receive back the results after we mail the fingerprint cards to Tallahassee. We wish to upgrade our technology in our Polk office to purchase a LiveScan electronic fingerprint machine that would allow us to receive results within 48-72 hours. This will allow our agency to process volunteers in a timelier manner to match them with a waiting youth. We have such a machine in Tampa, and it has greatly increased our accuracy and productivity.

Catholic Charities of Central Florida - Western Region

Mobile Food Pantries Project

~~\$9,000~~ **FUNDED!**

The Mobile Food Pantries of Agape Food Bank work to eliminate hunger by delivering truckloads of nutritious food to areas of need across Polk County. The target population is Polk County residents who are facing a "meal gap": food needs which are beyond their financial resources and not met via SNAP, the school lunch program, local food pantries, or other resources. Last year we distributed almost 200,000 pounds of food from all sources through 24 mobile food pantries across Polk County, feeding about 12,600 people. This year, with the additional resources from the GiveWell Community Foundation, we plan to increase non-USDA food distribution by at least 33% (about 56,500 pounds) through a targeted expansion of service to areas of greatest opportunity and highest need.

Catholic Charities of Central Florida - Western Region

SmilePak Program

~~\$28,000~~ **FUNDED!**

The Agape Food Bank and its SmilePak program work to eliminate hunger by providing over 1100 children with backpacks filled with nutritious food to take home each weekend of the school year. The target population is children age five or older who attend one of 21 schools in Polk County with high rates of students in the free and reduced school lunch program. School staff members identify children who receive free or reduced lunch and show signs of hunger. Agape Food Bank works with the school to establish a food pantry stocked with up to one month of food, which is then packed in backpacks at the school and distributed to the children to take home on Friday afternoons. SmilePak helps feed hungry children who otherwise might not have nourishment all weekend long.

Center for Independent Living in Central Florida

High School High Tech for Students with Disabilities

~~\$25,321~~ **Only \$5,321 left**

This program is designed to encourage students with disabilities, to set their sights on graduation, college and career. It gives them the opportunity to explore jobs or postsecondary education by providing a broad range of academic, career development and experiential resources and experiences that will enable them to meet the demands of today's workforce. Students take field trips to colleges and technical schools and are offered on-the-job experiences through job shadowing and internships. There is also a focus on building self-esteem, developing personal leadership skills, and preparing the students for life beyond high school. Statistics show that this program reduces the dropout rate and increases the number of students that enroll in post-secondary education or training.



Health & Human Services

Central Florida Speech & Hearing Center *Helping Polk County Hear 2014* **\$10,000 FUNDED!**

Hearing loss does not discriminate. Many times financial limitations get in the way of children and seniors obtaining the necessary equipment needed to maintain or improve their hearing connection to the outside world. Funding for this grant can help to ensure individuals will receive a complete hearing evaluation and be fit with the appropriate hearing device. They can also receive an amplified telephone from our FTRI program. To ensure the successful use of the hearing device and the associated equipment, the recipients and their family members will be encouraged to attend periodic socialization events (i.e., watching a popular movie via a loop to increase understanding) as well games (i.e., bingo for batteries).

Children's Home Society of Florida *Transportation for Success* **\$15,500**

Imagine a six year old little girl in her favorite pink dress waiting for a visit with her mom...only to wait for an hour and mom doesn't show. Or an eight year old boy who has been waiting all week to see his dad to only be disappointed when the visit has to be cancelled because his dad can't find a ride. While sad these stories are real for many of our children. Our families live at or below the poverty level and transportation issues for them are a reality. By facilitating transportation in the short-term, our staff is able to support families to attend parenting classes, participate in counseling services, or even visit with their children. Transportation for Success is vital to helping families overcome transportation challenges and engage in services to help their children safely return home.

Citizen CPR, Inc. *Hands Only CPR In Our Schools* **\$13,554 FUNDED!**

Hands Only CPR relies on a steady pumping rhythm instead of breathing for the victim. Program teaches Hands Only CPR skills to middle and high school students in Polk County. Our program will not only give students the ability to save a life but a better chance for a better outcome. This program will build a future generation willing to act when needed and raise cardiac survival rates in the home. In Polk County 75% of all cardiac arrests occur in home, but less than 1/3 receive bystander CPR before professional rescue arrives. Our cardiac survival in 2012 was only 10%. If you lived in Mesa, Arizona you would have had a 55% better chance of surviving a cardiac arrest. Polk County residents deserve to have a better chance to survive a cardiac arrest. This program will save lives!

Citrus Center Boys & Girls Clubs, Inc. *Triple Play Plus+* **\$35,300 Only \$28,925 left**

Triple Play: A Game Plan for the Mind, Body and Soul. This program (developed by Boys & Girls Clubs of America) encourages kids (and families) to eat healthier, become more physically active, enhances self-esteem, and the importance of developing respectful relationships with others. We will be adding our own programming geared to anti-bullying as part of the Soul component! This is the Plus+ addition. The Soul program encompasses environmental awareness and preservation and community service. The Mind program includes academics and creativity. The Body program focuses on physical activity, nutrition, and individual and team challenges.



Clark's House, Inc. *Veterans Housing First Initiative* **\$50,000 FUNDED!**

Veterans Housing First Initiative is designed to remove the barriers that are impeding individuals who have served their country their dependents and family members from maintaining quality permanent housing by assisting them with mortgage payments.

Destiknee Place, Inc. *Pursuit of Your Destiknee* **\$50,000 Only \$25,000 left**

Destiknee Place, Inc. is designed to aid female ex-offenders (a dramatically underserved segment of our population) successfully re-enter society. Our mission is to be a catalyst for positive change in the lives of women who struggle with incarceration by providing programs to help them become stable, productive individuals. We offer tutoring and classes using the nationally accredited curriculum "Tackling the Tough Skills" which includes skills for life and work; plus components on addictions and GED prep. Weekly support meetings based on the AA model are also encouraged. Christ Community Church donated a modular on their campus for these services. Program will serve up to 25 persons per cycle and be measured by their completion of life skill classes & where applicable, lack of recidivism.

Health & Human Services

Education & Empowerment, Inc. *Success for All- Adult Day Training Program (SFA-ADT)*

\$10,174 FUNDED!

Education & Empowerment, Inc. was formed to address service gaps within the service continuum available to people with disabilities. Last year, several people with disabilities living in East Polk County were negatively impacted when a local Adult Day Training (ADT) program serving people with disabilities relocated to the Lakeland area. This left a significant "service void" for people living in East Polk County. The Success for All Program will provide an opportunity for people living in East Polk County with disabilities to once again benefit from a centralized, fully integrated, ADT program providing meaningful day time activities. The families of the person with a disability will also benefit as they will receive a period of respite from their daily caretaking responsibilities.

Faith in Action North Lakeland Inc.

Faith in Action - Great Opportunities VIII
\$39,035

Faith in Action North, in our 11th year, continues to change to meet the needs of the elderly, homebound and needy. Our greatest requests are: transportation and food. Our services are food preparation, housekeeping, home care, respite and yard work. Each Tuesday and Thursday, FIA delivers and has available on site, fresh fruit, produce, bread and sweet treats. Once each month a bag of meat and staples is picked up by clients or delivered to clients that have no transportation or are unable to stand in line. FIA continues to: a) see that the needy seniors utilities are paid b) have monthly informative meetings and lunch for ALL seniors.

Florida Baptist Children's Homes

Project HEAL: A component of the LIFE program of the Florida Baptist Children's Homes.

\$25,000 FUNDED!

Project HEAL: Healthy Eating Active Living, is a component of the LIFE program on the Lakeland campus of the Florida Baptist Children's Homes (FBCH). The Project is designed to promote healthy lifestyle habits for children living in residential care between the ages of five to 18. Project HEAL will fund half of the campus' annual food budget and provide resources for a nutrition and fitness campaign aimed at educating children on the best ways to lead a healthy and active lifestyle. All residents served on the campus will benefit from this Project. The LIFE program started in 2013 to focus on key areas of personal development for our residents to ultimately help them succeed in their futures. FBCH is a faith-based organization providing services to children and families in need since 1904.

ElderPoint Ministries, Inc. *Collaborative Food Pantry*

\$40,000 FUNDED!

ElderPoint Ministries manages a collaborative food pantry, located at Saint David's Episcopal Church, which combines the efforts of small organizations with the goal of feeding the hungry to magnify their effectiveness. Alone, the pantries of Saint David's and ElderPoint served hundreds per month; collaboratively thousands are served weekly creating the third largest food pantry by volume in Polk County. In 2013 the pantry served over 100,000 people fresh produce, meat, dairy and shelf stable products. Statistically, food insecure people are also transportation disadvantaged. The pantry now is moving directly into the hungriest neighborhoods, eliminating the need for transportation to the food, bringing the food to those with the greatest need.



Guardianship Office of the Tenth Circuit Inc.

Disabled Adult Advocate Program
\$13,126.80 FUNDED!

Our goal is to provide an advocate for adults in Polk County who are disabled, poor and alone so that they can receive proper medical care and basic human needs. This advocacy can help to avoid neglect, abuse and homelessness for the vulnerable elderly, mentally ill and developmentally disabled adults who have no family to speak up for them. This can be accomplished through regular visits and/or guardianship when required. As concerned citizens, we want to give these disabled adults back their dignity.

Health & Human Services

Healthy Start Coalition of Hardee, Highlands & Polk Counties, Inc.

Beds 4 Babies

\$20,000 FUNDED!

The importance of safe sleep education to the community is vital in reducing infant mortality due to unsafe sleep practices. Accidental death to co-sleeping and sleeping in a non-approved crib are preventable with increased education and awareness. The Beds 4 Babies Project provides community awareness regarding safe sleep for babies and a portable crib for families who lack a safe place for their babies to sleep. Eligible participants receive a portable crib as well as information and instructions on safe sleep practices. Through the Beds 4 Babies Project an estimated 700 families are assisted each year. We are requesting funding to assist approximately 285 of these families with this grant application. This Project is the only project of its kind in the tri-county area.

Helping Our Needy Ones Respectfully, Inc. (H.O.N.O.R.)

Floor & Roof repairs, A/C & Plumbing + Professionals as needed, & misc. pieces & parts
\$7,500 Only \$1,590.74 left

H.O.N.O.R. is in its eighth year of serving the minor home maintenance and repair needs of the elderly throughout Polk County. These are people who don't have the means to maintain their home as a safe environment to live in and have no other place to go. The repairs we do are needs, not wants. The grant monies received will allow this ministry to repair holes in floors, especially mobile homes, provide minor roof repairs, repair a/c's & plumbing and call in professionals as needed (who provide services for a discounted rate) and repair a variety of other miscellaneous needs. H.O.N.O.R. receives referrals from more than 15 different agencies because no one else focuses specifically on these services throughout Polk Co. It's our way of answering prayers & giving hope to the hopeless.

Infants & Young Children of WCF, Inc. (IYC)

Healthy Steps Polk
\$37,210

Healthy Steps is an evidence based early intervention program that provides developmental screening, evaluation, and intervention supports for children, birth to three years, in pediatric practices that serve a large population of children with risk factors related to developmental delay. Infants are enrolled in the first four months of life upon the recommendation of the pediatrician. Home visits that integrate Healthy Steps will be used as needed. IYC will work with Lakeside Pediatrics to pilot Healthy Steps for 25 babies in the clinical practice, 16 hours a week, with our doctoral level interventionist. IYC will work with the practice to increase revenue from billing for the expanded developmental visit and will seek other grant sources to continue the project past the one year.

Justice For Our Neighbors *Justice For Our Neighbors* **\$10,000**

Taking the oath as a new U.S. citizen, being reunited with a family member after years of separation, receiving identification papers that allow a client to find a job...this is the work of Justice For Our Neighbors. JFON is a faith-based ministry that provides hospitality and compassion to low-income immigrants through immigration legal services, education and advocacy. Legal clinics in Lakeland serve Polk County residents with assistance for their immigration petitions. New in 2014 will be educational programs in the immigrant community to inform people of their responsibilities under U.S. law.



kidsPACK

kidsPACK - Just Feed "East Polk"
Kids
\$49,720.32

kidsPACK feeds homeless and food insecure children on weekends and holidays when school is not in session. kidsPACK have developed a "Kid Pack" that provides a package of nutritious, non-perishable food consisting of 2 breakfast, 2 lunch and 2 dinners for children to take home in a backpack each Friday to ensure they have access to food over the weekend. For many of these children, lunch on Friday is the last meal they will eat until they return to school on Monday morning to eat breakfast. During the summer kidsPACK supplements the FDACS Summer Food Program for Children by providing meals on weekends and holidays when meals are not provided. In-school and government feeding programs are not enough. kidsPACK bridges the gap and provides nutrition, and hope for hungry children.

Health & Human Services

La Leche League of Lakeland *Equipment, Outreach, and Education* **\$7,500**

La Leche League of Lakeland provides personal help from trained and experienced volunteers to the breastfeeding mothers and their babies in Polk County. Last year we began to distribute materials at the hospital/birth centers to make contact with the mother as early as possible and displace the giveaways provided by formula companies. Additional funds will enable us to purchase an infant scale, reference books, and books for families, further our education, and provide breast pumps and other lactation aids. If 90% of families breastfed exclusively for 6 months the US would save \$13 billion annually! The services and materials we provide are free and available to all; there are no financial requirements/applications necessary for people to avail themselves of our help.

Lake Wales Care Center *CARE Plan Program* **\$49,060 FUNDED!**

Lake Wales Care Center is seeking funding from the GiveWell Community Foundation to help expand a couple of critical staff functions in order to provide a more comprehensive development approach to serving our clients. Through this grant it is our desire to enhance services to clients with a "CARE plan": Case Management, Accountability, Responsibility and Empowerment. With current staff levels we have been able to maintain the quantity of services, but have a strong desire to increase the quality and depth of services.

Lakeland Regional Medical Center Foundation *LRMC Inpatient Rehabilitation Center* **~~\$50,000~~ Only \$25,000 left**

Inpatient Rehabilitation Facilities are for patients who require intensive interdisciplinary rehabilitation to improve functioning and promote the highest degree of independence possible. In keeping with the overall commitment of LRMC, we are looking to develop a state-of-the-art 32 bed rehabilitation facility utilizing the latest technologies, evidence based treatments, best industry practices, and the most innovative approaches to produce the highest level of functional recovery possible for our patients.

Lakeland Volunteers in Medicine *Early Detection Saves Lives* **\$7,500 FUNDED!**

Annual health screenings for women's health issues is an important factor in early detection and treatment of women's cancer. Health status surveys of new incoming patients at Lakeland Volunteers In Medicine indicate that just over 60% of the female patients have gone without an annual PAP for three years with 12% reporting having no PAP for over five years. Additionally, over 50% of female patients report having no screening mammogram in over five years. This program provides annual PAP tests, annual clinical breast exam, lab work, screening mammography, prescription services, ultrasound if required, colposcopy if required, Leetz procedure if required, patient education and referrals for advanced and specialized treatment.

Lakeland Volunteers in Medicine *Prescription Assistance Program* **~~\$50,000~~ Only \$45,000 left**

LVIM's Prescription Assistance Program enrolls patients in need of high-cost medications to the philanthropic programs of pharmaceutical manufacturers. Many of the patients who qualify are not able to complete the complex enrollment paperwork. Because of the complex process, a full-time employee is needed to navigate through the extensive paperwork required. Providing a Prescription Assistance Program coordinator, assisted by 20 volunteers, enables LVIM's 2,500 current patients to receive \$3 million dollars annually in free medications necessary to remain healthy, working and providing for their families.

Leland Family Ministries *Healthy Eating & Active Living (H.E.A.L.)* **~~\$5,244~~ Only \$4,244 left**

The Healthy Eating & Active Living ("H.E.A.L.") program is committed to empowering our city to a lifetime of fitness through knowledge, strength and discipline. By attending Leland Family Ministries' ("LFM") monthly Nutrition classes and lunch'n'learns, our free Restoration Gym, and the quarterly Fitness Boot Camp for teens and a weekly wellness program for teens, the Bartow community, young and old, can access our free resources and choose healthy eating and an active lifestyle! LFM is appreciative for partnerships with organizations such as Keiser University, Gold's Gym, Girls Inc., and Carver Recreational Center to assist in providing free services to people young and old in need of fitness resources.



Health & Human Services



Lighthouse Ministries, Inc.

Success Sheltering One Stop Care Program

\$50,000 FUNDED!

Lighthouse Ministries is a Success Sheltering One Stop Care Program for men, women, and women with children who need a place of refuge to begin a new life. We serve the individuals and families through our homeless shelter, our residential program or our H.O.P.E. Centers that work with the West Central Florida community at large. It is our desire to see those once deemed uneducated – educated; unemployed – employed; and homeless – self-sufficient and become leaders in every area of their life so they can share their success and give back to the community.

Paint Your Heart Out Lakeland

Paint Your Heart Out Lakeland 2014

\$5,000 FUNDED!

Paint Your Heart Out (PYHO) Lakeland has a two-part mission: to assist low-income elderly and disabled Lakeland homeowners and to encourage volunteerism in the community. With the help of community volunteers of many ages, we provide free painting and property clean-up services to qualified homeowners. By recruiting, organizing, supplying materials for, and giving recognition to teams of volunteers, PYHO not only delivers these much needed services to homeowners, but also encourages and celebrates volunteerism in the community. The commitment to volunteering extends to our board; PYHO has no paid employees or staff. We plan to involve at least 600 volunteers to paint at least 25 homes by the end of March 2014. This grant will help fund the materials for our efforts.

LifeChoice Community

Pregnancy Center

“Earn While You Learn” Education Program

\$2,000 FUNDED!

EWYL Program is an education-based resource program designed for young, first-time, expectant parents. The only one of its kind in East Polk County, this program offers tangible resources, parenting classes and education that will impact future generations. Clients from all over East Polk County come to take classes with an instructor. In turn, they earn credit to buy diapers, strollers, cribs, and car seats in the Baby Boutique. Clients choose from over 130 classes i.e. prenatal to postpartum care, infant safe-sleep, car seat safety, shaken baby syndrome, and infant first aid. LifeChoice Pregnancy Center believes this program positively impacts clients and their babies and therefore is a solid investment in the future of the community.

New Life Center for Family

Preservation, Inc.

Homeless to Wholeness

\$15,800

The New Life Center for Family Preservation is requesting funds to assist in the growth of the current community program they are providing to needy single pregnant women and teens in Polk County. At this time the New Life Center wishes to enhance their current program by providing additional financial assistance to clients to greater meet their immediate needs. Such services may include initial housing cost payments for deposits, rent, utilities, emergency housing and other assistance as needed. The goal of this enhanced program is to ensure that needy and homeless pregnant women and teens have a safe place to live, appropriate clothing, ample food, access to community resources and ongoing support throughout their pregnancy and well into their child's first years of life.

Peace River Center

Children's Action Treatment Team - CAT project

\$40,000 FUNDED!

The CAT Team serves children with a mental health or co-occurring substance abuse diagnosis, at-risk of out of home placement (institutionalization) for whom traditional services have not been effective. This team of mental health professionals works with children who are “the sickest of the sick” to build a support system around them and their families to enable the child to live at home in the family unit. CAT Team services are funded by Department of Children and Families, but it does not provide funds for the purchase of a needed minivan for transporting the children and their parents to appointments or to access community resources. This grant requests funds for purchasing a vehicle and associated transportation costs.

Health & Human Services

Peace River Center *Therapeutic Art Project 2014* **\$10,000 FUNDED!**

Peace River Center's Therapeutic Art Project will provide art instruction and supplies to clients working toward recovery from traumatic life experiences such as domestic violence, rape or who are recovering from and coping with mental illnesses such as depression, bipolar disorder, schizophrenia, ADD/ADHD or other similar mental disorders. The project will serve both adults and children providing a variety of therapeutic art experiences designed to lead to healthy emotional expression and improved self-image. Approximately 300 adults and children will benefit from this project over a one year period.

Polk Training Center for Handicapped Citizens, Inc. *Let's Get Hitched - Truck and Trailer* **\$5,500 FUNDED!**

Our project of getting hitched will allow us to take our recently purchased truck (phase one of this project) and match it to a hauling trailer (phase two) for safer transport of students and increased product delivery. With a revitalized business plan and having to sustain income to keep the organization progressing forward we will expand our business for self-support. We are not governmentally funded. To improve work safety, reduce trips, and increase efficiency we will need a larger trailer to assist this endeavor.



SPCA, Inc. *SPCA Florida's Medical Equipment Project* **\$7,500 FUNDED!**

SPCA Florida's McClurg Animal Center provides medical care to low-income pet owners in Polk County; however, all pet owners are able to receive the same high-quality, comprehensive diagnostic and treatment services for their pets. Treating a population that otherwise might never receive medical care for their pet; the staff at SPCA Florida provides specialty services and helps enroll low-income patients into programs that assist with their pet's medical bills. Funding of necessary medical equipment will support the continuation of valuable services to the pets in our community and ultimately improve patient health and quality of life.

Polk Senior Games *Seniors Need Technology Upgrade!* **\$5,850 Only \$3,850 left**

For 22 years Polk Senior Games has inspired seniors to stay physically, mentally and socially active by participating in Olympic-style sports and games. Now PSG needs to "get active" with an upgrade of computers, printers and software. Two office computers still have the Windows XP operating system, which will officially go "end of life" in April 2014 and support such as security updates will no longer be available. That, along with slow-running processors, outdated software and piecemeal hardware, is an obvious sign that it's time for new equipment. With a technology upgrade, Polk Senior Games will be more productive and keep up with the growing number of Baby Boomers!

Prevent Blindness Florida *Hope for A New Vision* **\$9,500 FUNDED!**

Loss of vision has a profound impact on quality of life. Often, a simple pair of prescription glasses can help an individual gain hope for the future. But the number of people who suffer from vision loss continues to increase. Working with the local Health Department and partner agencies, Prevent Blindness Florida provides vision screenings, eye health information and services to those in the Lakeland community who otherwise would not have access to care; medical eye exams and prescription glasses are provided to those who cannot afford them. The program will also offer eye disease prevention and resource materials, as PBF promotes awareness of the importance of receiving a complete regular eye exam. This project is conveniently available to the target clients.

Talbot House Ministries of Lakeland, Inc. *Copiers and Communication* **\$15,938**

This project is to replace existing small stand-alone printers that are in each office and the front office copier with two hub multi-function copiers. These copiers also print and scan. One hub multi-function copier would be located in the front offices and one located in the renewal program area. This would allow the counselors to print to their own copier to protect client confidentiality. The elimination of the small stand-alone printers that are in each office will save about eight thousand dollars a year in office expenses such as toner for all of the color printers that we use. The toner is quite expensive. The new printer/copier will be under a maintenance contract which includes toner.

Health & Human Services

Talbot House Ministries of Lakeland, Inc.

Mental Health Services
\$45,213

This grant request asks for the salary and taxes for a licensed mental health counselor for one-year. The mental health counselor provides individual and group therapy to clients referred from our Renewal, Homeless Prevention, and special needs programs. Polk County has a limited pool of resources that serve the mentally ill and our therapy program here at Talbot House helps alleviate this resource shortage by not only freeing other community resources from serving sizable numbers of individuals, but also the population we serve from being shuffled to unavailable resources. Untreated mental health issues often result in a cycle of family abandonment, unemployment, and homelessness. We strive to alleviate this prevalent social condition that is continually on the rise in our community.

Tampa Lighthouse for the Blind, Inc.

See What I Can Do With Early Intervention!!

\$5,686.55 FUNDED!

Young children learn by watching and mimicking those around them. Blind and visually impaired young children cannot see to mimic those around them and need extra supports in order to achieve independence to his or her fullest potential. Children also learn through play. Lighthouse Early Intervention Specialists use adaptive toys to stimulate 45 blind or visually impaired children's interest in their surroundings and teaches the child and parent age-developmentally appropriate play, self-help, and learning activities each year. Parents are provided education and materials on the effect of the visual impairment on their child, receive support and information for transition to preschool and/or kindergarten, and are provided information and linkages to other available resources.

The FALLS Adventure, Inc.

R.A.I.S.E. Lakeland – Active Group Lessons for Prevention of Bullying and Other Inappropriate Behavior
\$27,400

Research says physical, emotional & social safeties are pre-conditions for effective learning & stress-free health. Bullying (and other inappropriate behaviors) is preventing learning in our schools, families, communities, & workgroups while creating serious health issues. The FALLS has been building respectful communities in Lakeland since we first opened our Leadership Course in 1995. R.A.I.S.E. (RESPECT, ACHIEVEMENT, INCLUSION, SERVICE, & EMPATHY) represents five social skills to ensure bully-free environments once physical, emotional & social safeties are established. We will drive our Mobile Leadership Course with Classroom to Lakeland anytime, anywhere, for any event: Presenting, informing, mobilizing and teaching the information needed so Lakeland will RAISE up to change itself.

Tenth Judicial Circuit of Florida
Polk County Veterans Court Peer Mentor Program
\$29,370

One in five veterans returning home is bringing the war back home in the form of Post-Traumatic Stress Disorder (PTSD). Left untreated, service-related disorders and related substance abuse leads to involvement in the criminal justice system. The Volunteer Mentor Program aims to support justice-involved veterans, and link them with benefits and services they have earned. The Mentor Program taps into aspects unique to military culture and uses this to benefit veterans. Through this program, those who served in the military are allowed to participate in the court process with fellow veterans, re-instilling the camaraderie they felt in the military. Veteran participants, with the support of peer mentors, get needed treatment for substance abuse and PTSD to successfully complete the court program.

The House of Israel
Good Samaritan Project
\$30,000

The House of Israel, Inc. (HOI) Good Samaritan House (GSH) addresses issues for homeless women providing a safe alternative and empowering them time and assistance to move from a life of dependency to a life of self-sufficiency. Our services consist of hope, renewal and transformation to complete a woman. Our provisions consist of life skills, housing, employability skill, employment, educational skills and biblical principles to six women with substance, alcohol or mental disorders. Our hope is the GiveWell Community Foundation will once again partner with us in providing shelter and services. The need is to provide a gap service for the unmet need within our county. Our goals are as follows: 80% will obtain and remain in housing; 70% will increase skills and income, the outcomes are a one year plan.



Health & Human Services

The Salvation Army, a Georgia Corporation *Furnishing Hope* ~~\$50,000~~ Only \$4,750 left

The Salvation Army is relocating homeless families out of downtown Lakeland and out to the expansive family-friendly campus of The George W. Jenkins Community of Hope. The first build will expand the Emergency Efficiencies from 15 to 20 families, Transitional units from 12 to 21 families, and the HALO Child Enrichment Center will grow from 81 to 162 children. The Transitional Program is a two year commitment by families with training in finances, family dynamics, and other basic living skills. One adult in the family must maintain a job and the family is required to build a savings account. To Furnish Hope for a family unit - \$20,000 of funding will equip and furnish one of the 21 Transitional homes or \$10,000 of funding will equip and furnish one of the 20 Emergency Efficiencies.

TiAnViCa Riding Academy, Incorporated *Therapeutic Riding Activities* ~~\$46,500~~

Through successful partnerships and community support, TiAnViCa has provided equine assisted activities in Florida for the past eight years. This project is to provide continued support to TiAnViCa for our programs through care of our equine partners. Through therapeutic riding lessons, educational programs and a veterans program, TiAnViCa provides activities to 60+ individuals per week. Although TiAnViCa has a hardworking and dedicated staff and even harder working volunteers the real stars of TiAnViCa are our equine partners. The staff at TiAnViCa facilitates the magic that happens between horse and human. Funding from this project will be for the feeding and care of TiAnViCa's herd of 18 equine partners (active and retired).



TiAnViCa Riding Academy, Incorporated *The Pony Club at TiAnViCa* ~~\$16,220~~

TiAnViCa believes that many youth can learn about life through a partnership with equines. The Pony Club gives us the opportunity to do just this through the H.O.R.S.E. (H)orsemanship will install confidence and respect. (O)rganized teamwork will teach cooperation and leadership skills. (R)espect through horsemanship for self and others, the environment through conversation, and others through teamwork and service. (S)ervice through volunteerism. (E)ducation and an individual pace to achieve personal goals and expand knowledge through teaching others. This will be the first Pony Club center in Polk County but will be geared to at-risk youth giving them a structured program they can succeed at.

Tri-County Human Services *I Just Want to Be Like All the Other Kids* ~~\$10,000~~ Only \$1,995 left

Children of substance abusers are often emotionally neglected while their parents abuse alcohol and drugs. Their lives are chaotic. Often placed with relatives or in foster care, there is little consistency. They want to be like other kids... attending school regularly, and participating in activities such as soccer, dance class, learning to play an instrument, being a scout or joining FAA. We seek to help these children's lives be as normal as possible while helping them set and achieve personal goals. These activities can be costly... renting instruments, buying uniforms and equipment, etc. The children will propose an activity they want to enjoy, develop personal goals, and a simple budget. We will fund their endeavor, support their events, and recognize/praise their achievements.

University of Florida/IFAS Extension Polk County *Family and Consumer Sciences - Nutrition Education* ~~\$3,200~~ Only \$700 left

The University of Florida Institute of Food and Agricultural Sciences (UF/IFAS) Extension Polk County Family and Consumer Sciences (FCS) program provides nutrition education to the entire Polk County community. The FCS agent is a UF/IFAS faculty member to provide science-based, peer-reviewed curricula in a variety of learning settings. Participants learn about topics such as recommended dietary guidelines, how to make healthy choices by reading the nutrition facts label, ways to incorporate physical activity into their daily lives, and tips to eat healthy on a budget. The Extension FCS program addresses the well-being of the entire family and strives to educate individuals in Polk County to live safe and healthy lives.

Health & Human Services

Volunteers in Service to the Elderly (VISTE)

2014 VISTE Hot Meals for Seniors

~~\$30,000~~ **FUNDED!**

VISTE delivers fresh Hot Meals to 250 frail, elderly residents each Tuesday and Thursday. Recipients are men and women who can no longer cook for themselves. They may lack the physical stamina to stand at the stove or have cognitive issues that put them at risk when they cook. Hot Meals offer seasonal produce and choice cuts of meat. Menus are heart-healthy and diabetic friendly, providing a healthy alternative to salt- and preservative-laden canned and processed foods. VISTE Hot Meals are prepared by Guest Services, the cafeteria manager for Florida Southern College, and delivered to First Presbyterian Church for packaging and distribution by VISTE volunteers. The meals are often complemented by sandwiches and cookies prepared by students at Highlands Grove Elementary School.

Volunteers in Service to the Elderly (VISTE)

2014 VISTE Transportation Assistance

~~\$30,000~~

2014 VISTE Transportation Assistance continues a tradition that is a bedrock of VISTE service since inception in 1983. VISTE began driving a few frail, elderly men and women to doctor's appointments, the bank, grocery stores, and other destinations most of us visit without a second thought. These early VISTE clients had reached a time in their lives when it was no longer advisable for them to get behind the wheel. VISTE Transportation Assistance now makes 900 trips each month. The number of clients who rely on this assistance will soon exceed 1,000 annually. Over half of those helped in 2013 are 80 years and older; nearly 75% live alone; 78% subsist on less than \$20,000. VISTE Transportation Assistance has become vital to clients because 85% of all trips are for medical purposes.

We Care of Polk County

We Care Project Think Pink

~~\$40,000~~

We Care Project Think Pink is the only organization in Polk County that provides free or low-cost mammograms to low-income and uninsured residents of Polk County. It is a non-profit entity that was established in 2008 to provide free and low cost breast cancer screening mammograms as well as other breast diagnostic tests including breast biopsies and pathology tests to qualified residents. The program is primarily for women who are uninsured and have a household income that does not exceed 300% of the Federal Poverty Income Levels and are between the ages of 40 to 49. We're also able to provide services to women outside this age group, as well as to men, who are symptomatic or have a strong family history of breast cancer and have been determined to meet the remaining program criteria.

YMCA of West Central Florida

Adaptive Golf Program

~~\$3,000~~ **FUNDED!**

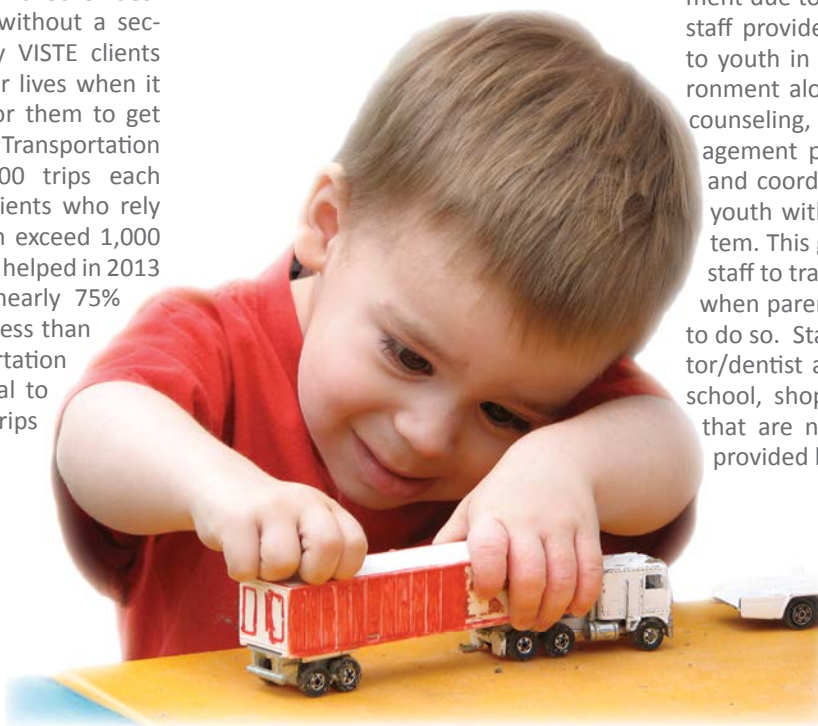
The Adaptive Golf Program is specially designed for individuals with mental disabilities. The program is open to all individuals with disabilities who are eight years of age or older. The Adaptive Golf Program works to build students golf skills, while enhancing self-confidence and well-being. The program will serve approximately 35 individuals. Low student/coach ratios will be used in order to maximize the learning process for these individuals. Areas of emphasis include driving, chipping, putting and participating in rounds of golf.

Youth and Family Alternatives, Inc.

George W. Harris, Jr. Runaway and Youth Crisis Shelter (Harris Youth Shelter)

~~\$21,500~~ **Only \$1,500 left**

The Harris Shelter is a 24 bed short-term program for youth that are homeless, in need of a temporary, out-of-home respite and for youth in need of emergency placement due to abuse and/or neglect. Harris staff provides 24 hour awake supervision to youth in a caring and supportive environment along with individual and family counseling, life skills education, case management personal enrichment activities and coordinates the academic needs of youth with the Polk County School system. This grant will provide a vehicle for staff to transport youth to appointments when parents are not available or willing to do so. Staff will transport youth to doctor/dentist appointments, court hearings, school, shopping, and for other services that are needed by the youth but not provided by the program.



Health & Human Services

Zoe's Journey, Inc.

A New Beginning

\$32,295

A New Beginning is a project of Zoe's Journey, Inc. to serve women and children coming out of life altering situations, specific to post-incarceration, homelessness, domestic violence, and addiction. The women are referred through the Polk County Criminal Justice and Child Welfare Systems, Polk County Jail, the homeless coalition, and other various social services agencies throughout Polk County. The ultimate goal of this program is to rebuild the lives of the women served and assist them in regaining custody of their children out of foster care. The women are educated, in a myriad of genre to include but not limited to parenting, substance abuse, finance, education and provided both individual and group therapy while living in a safe and secure environment.

71:17 Ministries, Inc.

2014 Oh My Baby

\$10,000 FUNDED!

At least two to three mothers are discharged from Lakeland Regional Medical Center (LRMC) every week without suitable clothing, blankets and supplies to meet the needs of their newborn babies. Oh My Baby offers help (and hope) by assembling fully equipped diaper bags (Starter Kits) for these mothers who are financially at risk. Distribution is determined by the social staff at LRMC. Each bag contains the essentials for feeding, bathing, and clothing a new baby - diapers, wipes, blankets, towels, washcloths, bath supplies, apparel, bottles, pacifiers, thermometers, etc. It also includes a toddler Bible. Each bag costs about \$100 to assemble and we deliver approximately 100 bags to LRMC every year. We would like to be able to increase this amount as we share the love of God in a tangible way.

Hope Equine Rescue, Inc.

Polk Gelding Project

\$10,000 FUNDED!

The Polk Gelding Project assists in controlling the equine population, through no-cost gelding clinics offered by Hope Equine Rescue, in partnership with Road Runner Vet Clinic of Plant City, Fla. This service is the only one of its kind in the entire Central Florida area. This grant will geld 100 horses in Polk County. Hope Equine Rescue promotes responsible horse ownership by offering no-cost gelding clinics, low cost vet clinics and free educational seminars. It is estimated at this time there are over 170,000 unwanted horses in America.



Leaning W Youth Outreach

Leaning W Outreach, Inc.

\$25,000

The goal of Leaning W Youth Outreach (also known as Leaning W Outreach) is to provide an environment that can assist veterans and youth in seeking a new perspective for their lives. Leaning W Outreach is a recreational program using equine therapy, fishing, camping, hiking, trail riding and other outdoor activities as subliminal, therapeutic tools to aid the veterans and youth on their road to recovery. Horses are an important element in this initiative. The benefits of equine therapy are unlimited and can't be over emphasized. Research shows positive results from human interaction with horses. This initiative presents opportunities to develop character, life skills, and social skills as well as provide a community based support system for youth and veterans who need to overcome challenges.

Meals on Wheels of Polk County

Meals on Wheels of Polk County

\$10,000 FUNDED!

Meals on Wheels of Polk County has a mission to deliver a hot, nutritious meal and a daily contact to the homebound of Polk County. Our organization receives no government funds and we must raise funds to continue our mission. We depend on the generosity of our community for volunteers and donations. Our 230 volunteers will drive many miles to insure that the recipients receive a hot, nutritious meal and a face to face encounter with a "friend" each day. This brings much comfort and peace of mind to the many we serve and their families. Meals on Wheels is dedicated to finding a way to serve all who need us. Please help us reach out to the elderly and homebound.

Neighborhood Service Center, Inc.

Computer Literacy: Educating Seniors for the 21st Century

\$15,000

The Neighborhood Service Center (NSC) has long been a place where low to moderate income seniors can come to socialize as well as learn basic skills. Throughout the years, the NSC has been helping seniors become more knowledgeable of the many things impacting their lives on a daily basis. Several years ago the NSC was equipped, primarily through donations, with computers and established a computer lab for its clients. With the rapid progress of electronics, especially the computers, the systems that have benefited our clients for so long are now outdated and unable to meet the basic computerization needs of our clients. As a result, the NSC is requesting the purchase of six computers to enhance its lab and to meet the better needs of its clients.

Other

Other

Polk County Workforce Development Board, Inc. *Summer Youth Employment & Training Program* ~~\$50,000~~ Only \$25,000 left

The national unemployment rate for youth ages 16-24 in July 2013 was 16.3 %, ranging from 13.9% for Caucasians, to 28.2% for African Americans. With Polk County overall unemployment rates above state & national averages, youth are faced with ongoing challenges in acquiring work experience. We have 546 youth age 16-21 enrolled in a year round program providing hands on career exploration, and culminating with an employment opportunity to gain marketable job skills, 30 hours a week for eight weeks. Assessments provide a synopsis of the youths' interests and aptitude, and are used to assist staff in recruiting mentors matching the youths' interests. Staff will provide job readiness training with topics including interviewing techniques, business attire, etiquette and networking skills.

The Wilson House *Part Time Counselor* ~~\$25,000~~

The Wilson House mission is to serve the chronically homeless, male substance abuser through counseling and the program of Alcoholics Anonymous. We have two and one half counselors and we are requesting funds to subsidize the part time counselor currently funded by last year's CFGL grant. Since starting our in-house counseling (2003) we have increased the number of residents to 25. This year we had our HUD grant renewed and, have applied for a new grant for leasing which will serve another 12 men. Our part-time counselor is a valued part of our counseling. We also serve approximately 29 individuals who have moved on to permanent housing. The goal is to take the hopeless, homeless individual from physical, mental and spiritual bankruptcy to being a productive member of our community.

P.E.A.C.E. Organization *Reducing Youth Arrests Project* ~~\$7,500~~ FUNDED!

In recent year's minor offenses that customarily were dealt with at home, school, or the community are increasingly leading to arrests. An arrest record eliminates youth from certain jobs, scholarships, and opportunities. In 2011-2012, Polk had the highest arrest rate per 1,000 youth in Florida and our school district had the second highest total arrests of any district in Florida. A total of 285 kids under age of 12 were arrested then as well. The Reducing Youth Arrests Project will work towards two outcomes. The first is to implement pre-arrest alternatives by continuing to work with the Polk County Sheriff Department and stakeholders in Polk County. The second is to work with Superintendent to bring down arrest numbers in schools by implementing best practices. These actions will reduce youth arrests.

SPCA, Inc. *SPCA Florida's Ani-Meals Program* ~~\$10,000~~

SPCA Florida's Safety Net Retention Programs provide alternatives for dog and cat relinquishment to animal shelters. We offer several programs aimed at helping people and pets in our community. Our Ani-meals program provides and delivers pet food to animals in elderly and home-bound families. We have expanded this program to include veterinary care to client's pets needing these services. Our Food Assistance Program provides food, veterinary care and other necessary supplies to clients that are experiencing a temporary financial hardship. Our collaborative efforts have benefited hundreds of pets in our community and beyond. By providing our services, we keep dogs and cats happy, healthy, with their owners and thereby fulfilling SPCA Florida's vision, Health Animals | Humane Communities.

Women's Resource Center of Florida, Inc. *Independence Program* ~~\$20,000~~ FUNDED!

The Women's Resource Center (WRC) requests funds to better serve the women in Polk County by continuing the highly successful Independence Program. This program provides comprehensive services to women who have a lack of resources for everyday living. Services include weekly workshops, counseling sessions, electric/rent assistance, employability skills training and more. This is a nine month commitment for those joining the program. Clients establish short and long-term goals which they work toward achieving. The outcome is to have the women on the road to self-sufficiency by the time each client graduates, Program is ongoing and has 44 clients at all times. There are 75 clients in the program annually. Also, WRC provides emergency assistance to about 3,500 Polk County residents annually.

Index of Agencies

71:17 Ministries, Inc. - 23
 A Woman's Choice - 4
Achievement Academy - 4
All Saints' Academy - 4
Alliance for Independence - 12
 Alzheimer's Association - Florida Gulf Coast Chapter - 12
 American Red Cross - 5
 Anchor House Ministries - 12
 Be The Match - 13
 Big Brothers Big Sisters of Tampa Bay - 13
 Bok Tower Gardens Foundation, Inc. - 1
 Camp Fire USA Sunshine Council - 5
Catholic Charities of Central Florida - Western Region - 13
 Center for Independent Living in Central Florida - 13
Central Florida Speech & Hearing Center - 2, 14
 Children's Home Society of Florida - 14
Citrus Center Boys & Girls Club Inc. - 14
 Citizen CPR, Inc. - 14
 Clark's House, Inc. - 14
 Community Baptist Mission, Inc - 3
 Destiknee Place, Inc. - 14
 Early Learning Coalition of Polk County - 5
 Education & Empowerment, Inc. - 15
 ElderPoint Ministries - 15
 Explorations V Children's Museum, Inc.- 1
 Faith in Action North Lakeland Inc. - 15
 Family Fundamentals - 5
 Family Literacy Academy of Lake Wales - 5
 Florence Villa Community Development Corporation - 5
 Florida Baptist Children's Homes - 15
Florida Dance Theatre - 1
 Florida Southern College - 6
 Florida West Coast Public Broadcasting Inc. (WEDU) - 6
Geneva Classical Academy, Inc. - 6
 Girl Scouts of West Central Florida - 6
 Guardianship Office of the Tenth Circuit Inc. - 15
 Gulf Ridge Council, BSA - 6
Harrison Center for the Arts Parents Association, Inc. - 6
 Healthy Start Coalition of Hardee, Highlands
 & Polk Counties, Inc. - 16
 Helping Our Needy Ones Respectfully, Inc. (H.O.N.O.R.) - 16
 HELP of Fort Meade - 7
 Hope Equine Rescue - 23
Imperial Symphony Orchestra - 1
 Infants & Young Children of WCF, Inc. (IYC) - 16
 Jaylens Challenge Foundation, Inc. - 7
 Junior Achievement of Tampa Bay - 7
Junior League of Greater Lakeland - 7
 Justice For Our Neighbors - 16
 kidsPACK - 16
 La Leche League of Lakeland - 17
 Lakeland Choral Society Inc. - 2
 Lakeland Community Theatre - 2
 Lakeland Housing Authority - 3
 Lakeland Police Athletic League - 8
 Lakeland Regional Medical Center Foundation - 17
Lakeland Volunteers in Medicine - 17
 Lake Wales Care Center - 17
 Leaning W Youth Outreach - 23
Learning Resource Center of Polk County, Inc. - 8
 Leland Family Ministries - 17
 LifeChoice Community Pregnancy Center - 18
 Lighthouse Ministries - 18
 Magnolia Montessori Academy - 8
 Meals on Wheels of Polk County - 23
 Mulberry Community Service Center - 3
 Neighborhood Ministries, FUMC Lakeland - 8
 Neighborhood Service Center, Inc. - 23
 New Life Center for Family Preservation, Inc. - 18
 Our Children's Academy - 9
 Our Children's Rehab Center - 9
 P.E.A.C.E. Organization - 24
 Pace Center for Girls Inc. - 9
 Paint Your Heart Out Lakeland - 18
 Parker Street Ministries - 9
Peace River Center - 18, 19
 Platform Art, Inc. - 2
 Polk County Board of County Commissioners - 9
 Polk County Schools, Florida First Start,
 Wilfred Smith Resource Center - 10
 Polk County Workforce Development Board Inc. - 24
Polk Education Foundation - 10
 Polk Senior Games - 19
Polk Training Center for Handicapped Citizens, Inc. - 19
 Prevent Blindness Florida - 19
 READ Lakeland, Inc. - 10
 READ Polk, Inc. - 10
Santa Fe Catholic High School - 10
South McKeel - 11
SPCA, Inc. - 19, 24
 St. Joseph's Academy - 11
 St. Joseph's Catholic Community - 3
Success By 6 - 11
Sun N Fun Fly In Inc. - 11
 Sunrise Community of Polk County - 11
Talbot House Ministries of Lakeland, Inc. - 19, 20
 Tampa Lighthouse for the Blind, Inc. - 20
 Tenth Judicial Circuit of Florida - 20
Theatre Winter Haven - 2, 11
The FALLS Adventure, Inc. - 3, 20
 The House of Israel - 20
 The Salvation Army, a Georgia Corporation - 21
 The Seed Sowers Evangelistic Association, Inc - 3
 The Wilson House - 24
TiAnViCa Riding Academy, Incorporated - 21
 Tri-County Human Services - 21
 University of Florida/IFAS Extension Polk County - 21
Volunteers in Service to the Elderly (VISTE) - 22
 We Care of Polk County - 22
 Wings of Eagles - 4
 Women's Resource Center of Florida, Inc. - 24
YMCA of West Central Florida - 12, 22
 Youth and Family Alternatives, Inc. - 22
 Zoe's Journey, Inc. - 23
 Organizations in **blue** have an established fund within the GiveWell Community Foundation.

BOARD MEMBERS

Executive Officers

Bruce Abels, Board Chair
 Laura Hawley, Vice Chair
 Walker Wilkerson, Secretary/Treasurer
 Charles McPherson, Immediate Past Chair
 Barney Barnett, Council Chair
 Edward Grossman, Audit Committee Chair
 Lyle Philipson, Investment Committee Chair
 Terry Simmers, President/CEO

Board Members

Bruce Abels
 Barney Barnett
 Brenda Craft
 Jim Chaffin
 Jeff Cox
 Patrick Fagan
 Edward Grossman
 Laura Hawley
 Clayton Hollis
 Sarah McKay
 Charles McPherson
 Suzie Moraco
 Lyle Philipson
 Bonnie Parker
 Gary Price
 Anu Saxena
 Carol Shira
 Rick Stephens
 John Vreeland
 Walker Wilkerson

STAFF

Terry Simmers, President/CEO
 tsimmers@givecf.org
 Lori Martini, Chief Philanthropic Officer
 lmartini@givecf.org
 Kay Stefanski, Director of Philanthropic Services
 kstefanski@givecf.org
 Amy Royal, Chief Financial Officer
 aroyal@givecf.org
 Johnna Martinez, Grants Manager
 jmartinez@givecf.org
 Erin Ferguson, Communications & Administrative Coordinator
 eferguson@givecf.org

While every effort has been made to ensure the accuracy of the information supplied herein, the Foundation cannot be held responsible for any errors or omissions. Project descriptions are solely those of the author of the nonprofit organization.

Online photo resource courtesy of
www.sxc.hu/home



Phone: (863)683-3131 www.giveCF.org

1501 South Florida Ave, Lakeland, FL 33803 20 Third Street SW, Ste 307, Winter Haven, FL 33880