

1997 2005 2010  
1998 2006 2011  
1999 2012  
2000 2013  
2001 2014  
2002 2007 2015  
2003 2008 2016  
2004 2009 2017



**2017-18**  
**ANNUAL REPORT**



# LETTER FROM THE BOARD CHAIR AND PRESIDENT/CEO

Dear friends,

Anniversaries are occasions for celebrating the past and imagining the future. As the GiveWell Community Foundation marked its 20th anniversary this year, we have had so much to celebrate! Because of you, the Community Foundation has grown its assets to \$178 million, ensuring that local charities can continue to enrich and empower our community and its residents. You've helped direct \$161 million to local nonprofits to support their amazing work over the last two decades.

Highlights from our 20th year include:

- Awarding \$21 million through nearly 1,000 total grants;
- Funding 75 high-impact community programs through the Impact Polk grant cycle;
- Launching a new grant cycle called "Empower Polk," wherein capacity-building grants were awarded to 25 agency fundholders;
- Establishing the new "Disaster Relief Fund" in response to Hurricane Irma;
- Providing a second investment option for fundholders to advise their charitable fund within a new Conservative Pool; and
- Collaborating with several other organizations on an initiative to improve college and career readiness throughout our community.

This annual report will offer insight into these accomplishments.

As we celebrate the last 20 years, what we are really celebrating is you. You, the residents and organizations who care deeply about our community, have made this momentous occasion possible.

Thank you for your continued support of the GiveWell Community Foundation!



*Suzanne H. Moraco*

**Suzie Moraco**  
Board Chair



*Terry W. Simmers*

**Terry W. Simmers**  
President/CEO

# TABLE OF CONTENTS

**ABOUT THE FOUNDATION ..... 4**  
    CELEBRATING 20 YEARS.....5

**2017-18 BY THE NUMBERS .....8**  
    GRANTS OVERVIEW ..... 10  
    FUNDS OVERVIEW..... 11

**GRANTS & IMPACT..... 12**  
    IMPACT POLK ..... 12  
    EMPOWER POLK ..... 14  
    DISASTER RELIEF FUND.....17  
    COLLEGE ACCESS & SUCCESS ..... 18

**FINANCIAL SUMMARY ..... 19**

**FOUNDATION LEADERSHIP .....20**

**CONTACT US .....22**



Excellence. Accountability. Impact.™

GiveWell Community Foundation is accredited with National Standards for U.S. Community Foundations® - the highest standards for philanthropic excellence.



# vision 20/20

*a look at the past...*

*a vision for the future!*

## ABOUT THE FOUNDATION

**G**iveWell Community Foundation is a 501(c)(3) public charity serving Polk, Hardee, and Highlands counties located in the heart of Central Florida. Our mission is to champion charitable giving to improve the quality of life in the areas we serve, both now and for future generations.

Our story begins in 1997, when a group of community leaders who cared about shaping their city's future established the Community Foundation of Greater Lakeland (CFGL). Initially established as an affiliate of the Community Foundation of Tampa Bay, CFGL became a stand-alone 501(c)(3) public charity in 2000. Four years later, another group of community-

minded citizens came together to establish the Community Foundation of Greater Winter Haven as an affiliate of CFGL.

Through the years, the two organizations served neighboring geographic areas and accomplished great things. Then in 2013, the decision was made to combine their resources and form one community foundation capable of doing even greater work. From this vision, the GiveWell Community Foundation was born and continues to be a reputable, efficient place to invest dollars that grow to do tremendous good.

Today, the Community Foundation manages 314 charitable funds established by a broad base of donors.



## CELEBRATING 20 YEARS

The GiveWell Community Foundation and its fundholders celebrated 20 years of history with two special events on October 10, 2017.

On the morning of October 10th, the Community Foundation provided a half-day workshop for nonprofit organizations that have established agency funds with the Foundation. Board members, executive directors, and fundraising staff of those agencies were invited to attend. The workshop was led by Carol Weisman, an internationally-known speaker, author, and trainer on volunteerism, fundraising, and governance. We look forward to hosting more learning

opportunities going forward based on the positive feedback we received.

Later that day, Foundation fundholders were invited to attend the "Vision 20/20" 20th annual event at the Lone Palm Golf Club in Lakeland. The special event occurred in the same room where the founding members had met and established the Community Foundation 20 years prior.

The annual event featured Carol Weisman as the keynote speaker and the debut of a short video documentary celebrating the history and impact of the GiveWell Community Foundation and its fundholders.





VISION 20/20: A LOOK TO THE PAST... A VISION FOR THE FUTURE

# NONPROFIT WORKSHOP

OCTOBER 10, 2017





VISION 20/20: A LOOK TO THE PAST... A VISION FOR THE FUTURE

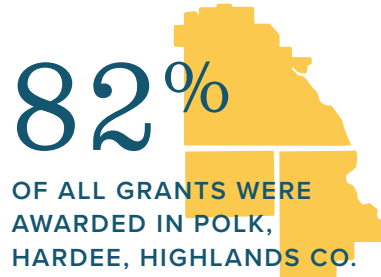
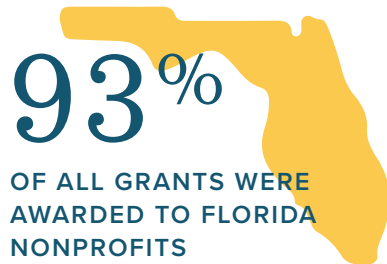
# 20TH ANNUAL EVENT

OCTOBER 10, 2017



# 2017-18 BY THE NUMBERS

JULY 1, 2017 - JUNE 30, 2018



GRANTS AWARDED TO NONPROFITS:

**948**

TOTAL GRANTED TO NONPROFITS:

**\$21M**

NEW FUNDS ESTABLISHED IN 2017-18:

**16**

TOTAL ASSETS MANAGED BY THE FOUNDATION:

**\$178M**

TOTAL CHARITABLE FUNDS AT THE FOUNDATION:

**314**

TOTAL GRANTED SINCE FOUNDATION'S INCEPTION:

**\$161M**

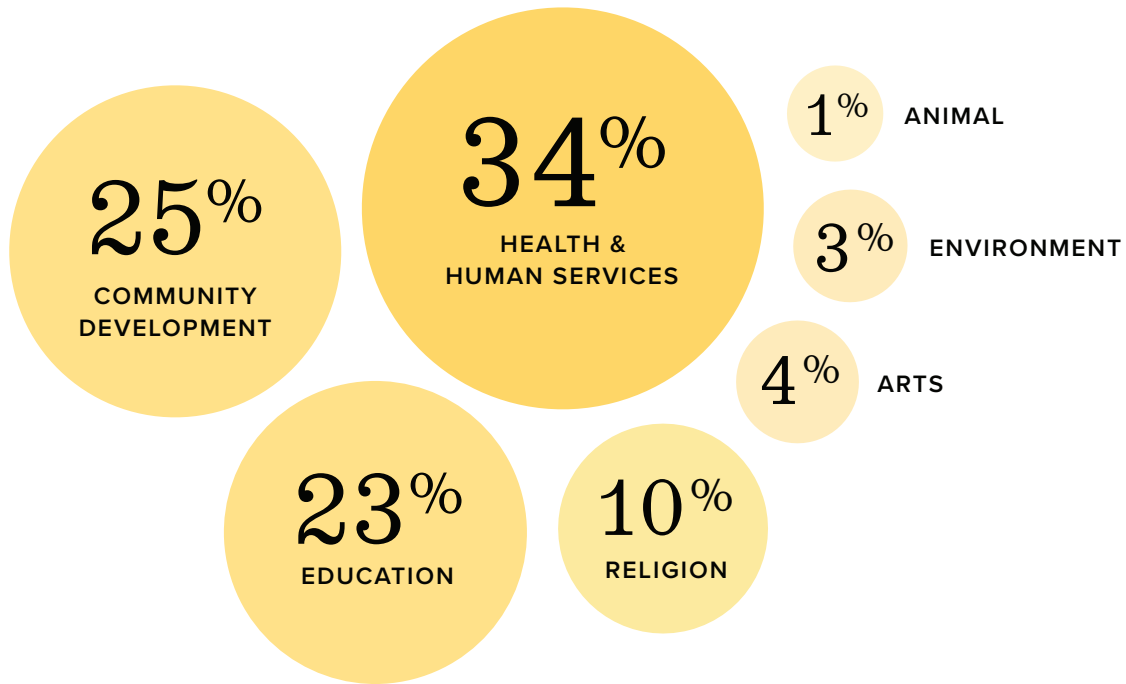




"THANK YOU" PHOTOS PROVIDED BY AGENCY FUNDHOLDERS:  
LEARNING RESOURCE CENTER, PEACE RIVER CENTER, POLK EDUCATION  
FOUNDATION, GENEVA CLASSICAL ACADEMY, AND YMCA OF WEST CENTRAL FLORIDA

# GRANTS OVERVIEW

SEE WHERE YOUR GRANTS HELPED IN 2017-18

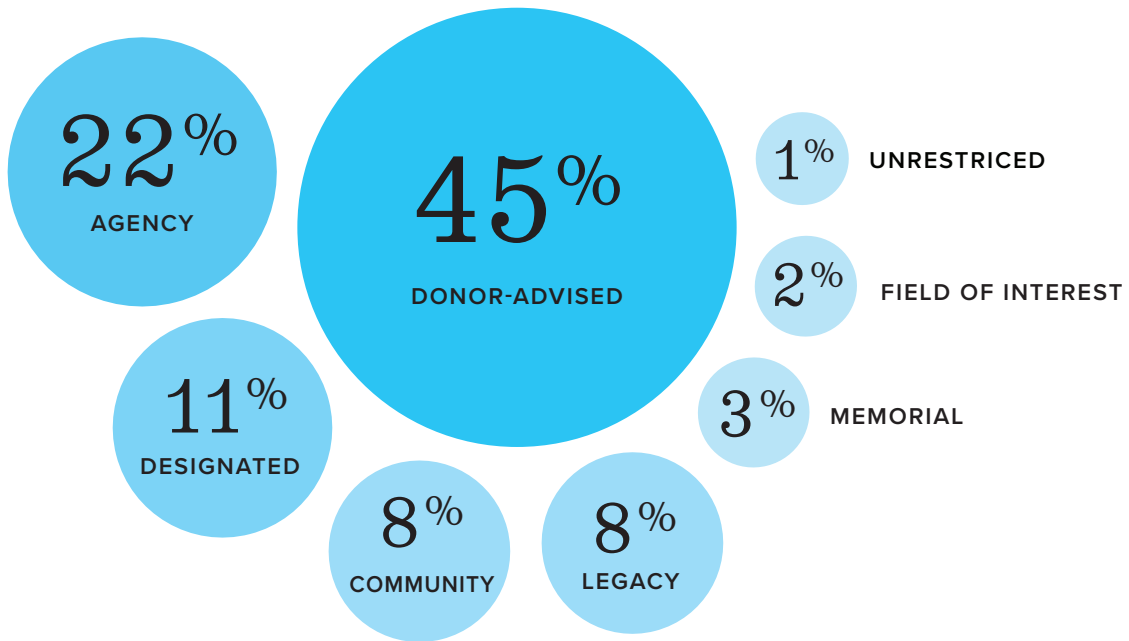


**D**uring the 2017-18 fiscal year, more than \$21 million was granted from the GiveWell Community Foundation through nearly 1,000 grants. These grants were awarded to impactful nonprofits locally and beyond. The chart above provides an overview of the causes these grants supported.

Most of our grants to the community are directed by the donors who created and/or advise "donor-advised" funds. On the following page, you will find an breakdown of the charitable funds that make up the Community Foundation. The Foundation currently manages 314 active funds totalling more than \$178 million in assets.

# FUNDS OVERVIEW

## TYPES OF FUNDS AT THE FOUNDATION



### DONOR-ADVISED FUND

Donors play an active role by making grant recommendations.

### AGENCY FUND

Cost-effective investment strategies and enhanced stewardship for nonprofit organizational assets.

### DESIGNATED FUND

Create long-lasting support for your favorite nonprofit organization(s).

### LEGACY FUND

Setup a bequest to your community that directs contributions to your favorite nonprofit organizations or causes.

### COMMUNITY FUND

Allows donors to meet community needs in perpetuity.

### MEMORIAL FUND

Forever honor a loved one by supporting a field of interest(s) or organization(s) which would have pleased that person.

### FIELD OF INTEREST FUND

Create a permanent resource to support the causes you care about.

### UNRESTRICTED FUND

Enables the Community Foundation's Grant Committee to address a broad range of local needs.

# IMPACT POLK

## COMMUNITY COMPETITIVE GRANT CYCLE

# 75

IMPACT POLK 2018  
GRANTS FUNDED

TOTAL GRANTED THROUGH  
IMPACT POLK 2018:

# \$691,293.25

# 154

IMPACT POLK GRANT  
APPLICATIONS RECEIVED

# 100,000+

INDIVIDUALS IMPACTED BY  
IMPACT POLK 2018

**I**mpact Polk is an annual competitive grant program of the GiveWell Community Foundation with the goal of addressing community needs throughout Polk County. Impact Polk grants often support a broad range of needs, such as arts and culture, education, health, and human services.

Any tax-exempt public nonprofit organization serving Polk County is eligible

to apply for Impact Polk grant funding.

This year, the Foundation received an unprecedented amount of grant requests for Impact Polk funding, and our fundholders were able to provide an amazing amount of support! Nearly \$700,000 was awarded through the competitive grant cycle, benefitting the lives of more than 100,000 people all throughout Polk County.



## VICTORY RIDGE ACADEMY'S "SUMMER CAMP FOR CHILDREN WITH SPECIAL NEEDS" IMPACT POLK PROGRAM

Summer break is often a fun and relaxing time for many students. However, when the next school year arrives, some children have trouble recalling what they had learned and picking up where they left off the previous year. This obstacle can be especially difficult for students with special needs.

To address this need in their community, Victory Ridge Academy, located in Lake Wales, developed the “Summer Camp for Children with Special Needs” program to provide daily educational and therapeutic activities designed to help prepare students for the upcoming school year. The program was partially funded by an Impact Polk

2018 grant from the George W. Jenkins Fund within the GiveWell Community Foundation.

In addition to school readiness, the summer camp helped students build confidence and independence, practice interacting with others, develop relationships and deepen friendships, learn from positive role models, and stay active with regular exercise.

Funding from the Impact Polk grant also allowed Victory Ridge Academy to purchase a golf cart to improve their medical staff’s ability to quickly respond to children on multiple campuses.

# EMPOWER POLK

## GRANT CYCLE FOR AGENCY FUNDHOLDERS

# 25

NONPROFITS AWARDED  
EMPOWER POLK FUNDING

TOTAL GRANTED THROUGH  
EMPOWER POLK:

# \$110,699

**T**his year, the Foundation launched a new grant cycle called Empower Polk. The goal of this new program is to empower local nonprofits, meeting needs that will help them fulfill their mission and support our community more effectively. The grant cycle received funding from generous fundholders as well as the GiveWell Community Foundation's Unrestricted Grant Committee Fund.

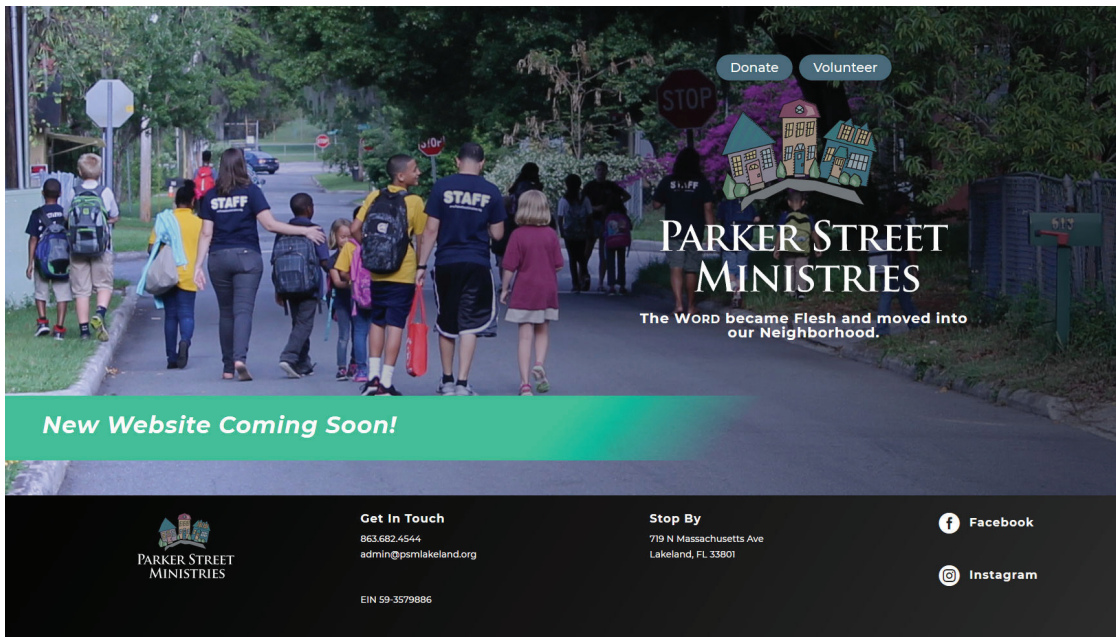
Support for core operations and business infrastructure can be the most needed and most difficult for nonprofit organizations to obtain. So, for its inaugural year, the Empower Polk grant cycle focused specifically on infrastructure support, helping nonprofits get the additional training, tools, or technology they need to better execute their mission.

More than \$110,000 was awarded to

25 local nonprofits through Empower Polk this year. Many organizations expressed that without capacity building grants, it would be extremely difficult to find dollars that could be spent on these crucial upgrades. Empower Polk helped fund capacity building initiatives such as board training and strategic planning, infrastructure and technology upgrades, website enhancements, rebranding, and creating promotional videos.

The Empower Polk grant cycle is open to nonprofit organizations who have established an agency fund with the Community Foundation.

Want to join in empowering local nonprofits? Donations to the GiveWell Community Foundation Unrestricted Grant Committee Fund will fund future Empower Polk grant cycles.



## PARKER STREET MINISTRIES UPDATES WEBSITE WITH CAPACITY-BUILDING GRANT FROM EMPOWER POLK

Parker Street Ministries found themselves in need of a new website. The look of their site hadn't changed in 10 years, but more importantly, it had become unreliable. Because of its age, they were advised against installing updates and warned it could suddenly go down at any time. Even adding new content to the website required complicated work-arounds.

For a nonprofit organization, a functional website is crucial for reaching clients, donors, and volunteers and

receiving donations. An Empower Polk grant allowed Parker Street Ministries to make significant updates to their website.

“How grateful we are for the capacity-building grant. It arrived just in time as our website is dying. The first thing to go (beyond repair) was the Donate tab!” said Kim Schell, Parker Street Ministries’ Chief Operating Officer. “Our page was a mess, but now we have the funding to fix it. Thank you!”



## EMPOWER POLK GRANT ALLOWS VISTE TO MAKE INFORMATION TECHNOLOGY IMPROVEMENTS

The mission of VISTE, or Volunteers in Service to the Elderly, is to enable the frail elderly to remain safely and independently in their own homes. VISTE has a small staff, but thanks to passionate volunteers, they are able to accomplish amazing things throughout Polk County.

With so many volunteers and clients, communication and organization technology is vital. Unfortunately, earlier this year, VISTE started experiencing technical issues with their network server. Every time it stopped working properly, their computers, phones, and contacts would be unusable. Their entire operation would come to a sudden, screeching halt.

“We had people call here for services... call to volunteer, and we had no way to respond,” said VISTE president, Steve Bissonnette. “The absence of that server dramatically impacted our ability to serve our clients and volunteers.”

Through Empower Polk funding, VISTE was able to purchase a new server that will help them continue serving their clients and volunteers for many years – without having an effect on their operating budget. Bissonnette said the new server was “a technology upgrade that might sound insignificant, but it is critical for us to operate.”



# DISASTER RELIEF FUND

# \$31,651

COLLECTED TO PROVIDE  
HURRICANE IRMA RELIEF

**I**n the early hours of Monday, September 11, 2017, Hurricane Irma made landfall and went directly through our region as a category two hurricane. Polk, Hardee, Highlands, and many other Florida counties felt the force of violent winds and heavy rain, leaving most without power and many with severe property damage.

In anticipation of Hurricane Irma's impact on our community, the GiveWell Community Foundation launched the Disaster Relief Fund. The goal of this fund was to use contributions to provide long-term relief throughout our community.

The Community Foundation surveyed local nonprofits to identify long-term needs caused by the storm, and the results were shared with the Foundation's Grant Committee, a volunteer group of board, council, and community members who provide guidance for unrestricted funding distribution.

The fund received contributions from local fundholders as well as others from around the country, and \$31,651 was granted to local

nonprofits to provide relief to an estimated 1,000 people within our service area.

To those who contributed to the Disaster Relief Fund, thank you for generosity. Your contributions helped fund local long-term relief that made a lasting impact on the lives of local families.

Aisha Wright, Executive Director of Help of Fort Meade said funding helped 25 clients recover from Hurricane Irma. "One single mother of three was able to relocate back to Fort Meade with her family after the hurricane flooded her apartment and forced her to move... Being closer to family helped with her children, and she was so grateful."

"Children who are hungry cannot learn. kidsPACK program children have the security and peace of mind knowing that they will have food to eat on the weekend," said kidsPACK's Executive Director, Patty Strickland. Funding helped feed more than 100 children who are identified as displaced families by Hurricanes Irma and Maria.

Faith in Action of North Lakeland's Executive Director, Mildred McMillon, said funding helped replenished their food pantry and health supplies that had been distributed after the storm. They were also able to help clean the homes of homebound seniors that sustained water damage to prevent mildew or other health hazards.



## COLLEGE ACCESS & SUCCESS INITIATIVE

As a member of the Community Foundations of Florida and the Florida Philanthropic Network, GiveWell Community Foundation had the opportunity to apply for and received a College Access & Success Exploratory Grant for \$5,000. Additionally, the opportunity for a "Challenge Grant" of \$25,000 was offered, provided that we raised matching funds. Thanks to generous fundholders, we met the \$25,000 match and received the grant. Made available through the College Access and Success Initiative, these grants are designed to assist in the formation or support of a Local College Access Networks (LCANs) within our community.

GiveWell Community Foundation is supporting our LCAN through a partnership with Polk Vision. Polk Vision is a broad, community-led partnership of

organizations, businesses, government and individuals acting collectively to ensure implementation of Polk County's community vision.

College Access & Success Initiative is intended to leverage local private investment, through Florida community foundations, to engage and sustain college access coalitions, thereby increasing the college-going and post-secondary completion rates of students traditionally underrepresented in higher education and building a college-going culture throughout the state.

The College Access and Success Initiative is an initiative of the Florida Philanthropic Network, made possible through funding from the Helios Education Foundation and The Kresge Foundation.

# FINANCIAL STATEMENT

<b>ASSETS</b>	<i>As of June 30, 2018</i>	<i>As of June 30, 2017</i>
Cash .....	\$4,345,928	\$9,532,679
Investments .....	\$170,072,282	\$147,118,331
Other Assets .....	\$3,569,972	\$3,888,832
<b>Total Assets</b>	<b>\$177,988,182</b>	<b>\$160,539,842</b>
<b>LIABILITIES AND NET ASSETS</b>		
Current Liabilities .....	\$5,206,940	\$1,763,331
Funds Held as Agency Endowments .....	\$12,243,320	\$9,650,881
Foundation Net Assets .....	\$160,537,922	\$149,125,630
<b>Total Assets</b>	<b>\$177,988,182</b>	<b>\$160,539,842</b>
<b>REVENUE AND SUPPORT</b>		
Gifts Received .....	\$22,249,003	\$20,988,671
Net Investment Returns .....	\$11,033,063	\$13,867,107
<b>Total Revenue and Support</b>	<b>\$33,282,066</b>	<b>\$34,855,778</b>
<b>GRANTS AND EXPENSES</b>		
Grants Awarded and Programs .....	\$21,029,505	\$21,187,776
Support Services .....	\$840,269	\$812,852
<b>Total Grants and Expenses</b>	<b>\$21,869,774</b>	<b>\$22,000,628</b>
<b>NET ASSET SUMMARY</b>		
Change in Net Assets .....	\$11,412,292	\$12,855,150
Net Assets at Beginning of Year .....	\$149,125,630	\$136,270,480
<b>Total Net Assets</b>	<b>\$160,537,922</b>	<b>\$149,125,630</b>

# FOUNDATION LEADERSHIP

## 2017-18 BOARD OF DIRECTORS

Suzanne H. Moraco <i>Board Chair</i>	Ed Grossman <i>Audit Committee Chair</i>	Bruce Abels	Bonnie Parker
Jeffrey Cox Sr. <i>Board Vice Chair</i>	Bill Dorman <i>Grant Committee Chair</i>	Barney Barnett	Lyle Philipson
Laura Hawley <i>Secretary</i>	Jim Chaffin <i>Investment Committee Chair</i>	Anne Furr	Thomas (Tim) Putnam
Walker Wilkerson <i>Treasurer</i>	Jack Hollis <i>Regional Leadership Council Chair</i>	John "Jay" Gray Jr.	Linda Rich
Clayton Hollis <i>Immediate Past Chair</i>	Sandra Sheets <i>Board Attorney</i>	Kevin Hennessey	Richard Stephens
		Roger Ingley	Mark Turner
		Sarah McKay	John K. Vreeland

## 2018-19 SLATE OF OFFICERS AND CHAIRS

Jeffrey Cox Sr. <i>Board Chair</i>	Anne Furr <i>Secretary</i>	Ed Grossman <i>Audit Committee Chair</i>	Bill Dorman <i>Regional Leadership Council Chair</i>
Jack Hollis <i>Board Vice Chair</i>	John "Jay" Gray Jr. <i>Treasurer</i>	Jim Chaffin <i>Investment Committee Chair</i>	Suzanne H. Moraco <i>Immediate Past Chair</i>

## STAFF MEMBERS

Terry W. Simmers <i>President/CEO</i>	Angela Baragona, CPA <i>Controller</i>	Brittany Graham <i>Receptionist</i>	Johnna Martinez <i>Grants Manager</i>
Lori Martini <i>Chief Philanthropic Officer</i>	Rhonda Todd <i>Community Engagement Specialist</i>	Christy Vreeland <i>Office Manager</i>	Dave Walter <i>Communications Manager</i>



**LIZ WOOTEN-RESCHKE, MPA LEADING THE REGIONAL LEADERSHIP COUNCIL IN AN INTERACTIVE WORKSHOP AT THE HISTORIC GRAM PARSONS' DERRY DOWN IN DOWNTOWN WINTER HAVEN**

## 2017-18 REGIONAL LEADERSHIP COUNCIL MEMBERS

Jack Hollis  
*Regional Leadership  
Council Chair*

Wesley Barnett\*

Mike Furr

Jennifer Royal

Chad Barnhardt

Dick Johnson

John Scheck

Tom Oldt\*  
*Region 1 Chair*

Joe Bogdhan

Kathryn Koch

Richard Shapiro

Jean Bostick\*

Josh Lewis

Sandy Sheets

Kimberly Elmhorst\*  
*Region 2 Chair*

John Curtis

Brian Marbutt

Carol Shira

Bruce Davis

Parkhill Mays

Chris Sikes

Darlene Eanett

Dana Y. Moore

Charles Soule

Rusty Ingley  
*Region 3 Chair*

Michael Ehlenbeck

Alice O'Reilly

Jillian T. Spangler

Brian Fisher

Carole Philipson

Jeff Walker

John Fitzwater

Renee Pobjecky\*

*\* Indicates Regional Leadership Council members who have joined the 2018-19 Board of Directors*



## CONTACT US

---

### MAIN OFFICE

1501 South Florida Avenue  
Lakeland, Florida 33803

**OFFICE** 863-683-3131

**FAX** 863-683-5909

**WEBSITE** [www.GiveCF.org](http://www.GiveCF.org)

### SATELLITE OFFICE

20 3rd Street SW, Suite 307  
Winter Haven, Florida 33880

### SOCIAL MEDIA



### OUR MISSION

Our mission is to champion charitable giving to improve the quality of life in the areas we serve, both now and for future generations.



GIVEWELL COMMUNITY FOUNDATION STAFF MEMBERS (LEFT TO RIGHT):  
BRITTANY GRAHAM, TERRY SIMMERS, ANGELA BARAGONA, LORI MARTINI,  
JOHNNA MARTINEZ, CHRISTY VREELAND, DAVE WALTER, AND RHONDA TODD.

# THANK YOU FOR A GREAT YEAR!

---



1501 South Florida Avenue, Lakeland, FL 33803  
863-683-3131  
[www.GiveCF.org](http://www.GiveCF.org)